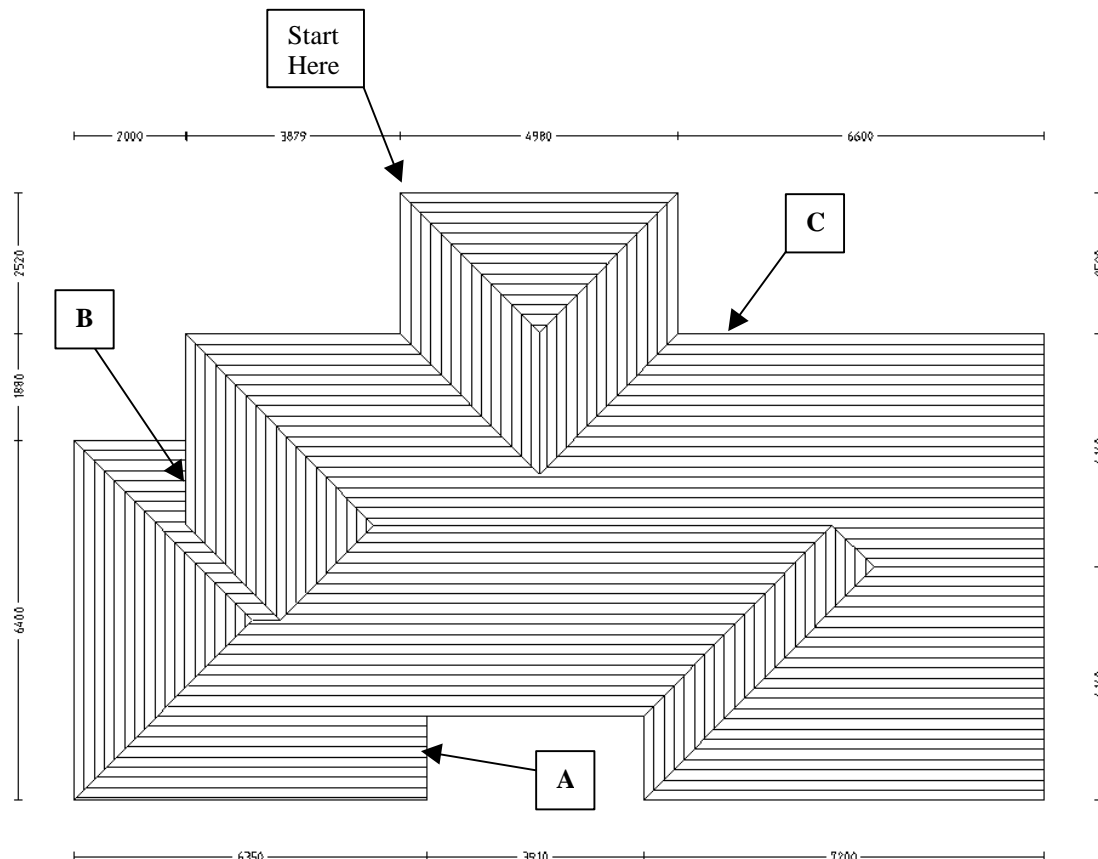


Number: 9

Objective: Illustrate use of Barge Lines and Intersect Planes

**Commands used: Copy-Line
Trim-Line
Ins-Plane**



To draw up the roof we need to split it up into two sections. The above section is the majority of the roof and we will draw it up first.

Starting where shown go **right 4900, down 2520**, now go **right again 2800 plus the 3800** of the second part of the roof. Continue around the house as normal until you get to the top of the first hip on the left hand side.

From here go **right 2000, down 1500**(as this is how far into the roof the second hip starts), **right 1, up 1500 plus 1880**. From here you can close square.

Setup defaults as required. When asked for gable ends select the right hand end only.

When you are asked for barge lines select Yes and select eave line **A** and **B**.

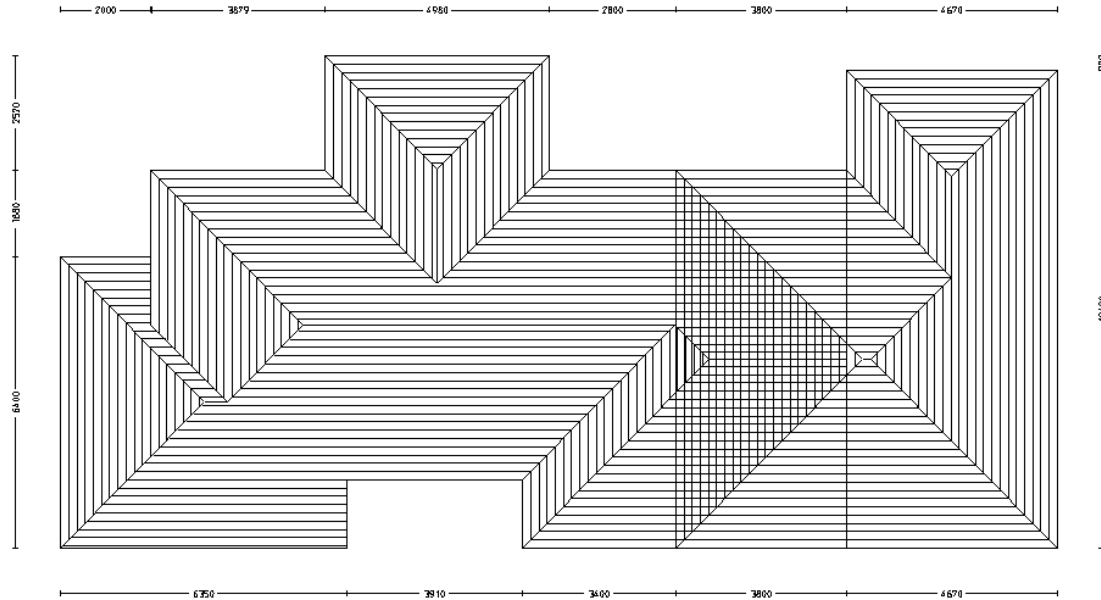
Note: When selecting eave line **B** ensure you select the second shorter line, as the first will be the wall line.

The roof should now draw up like the one above. Using **Mod-Roof | Hip-To-Gable**, change the left hand hip end to a gable.

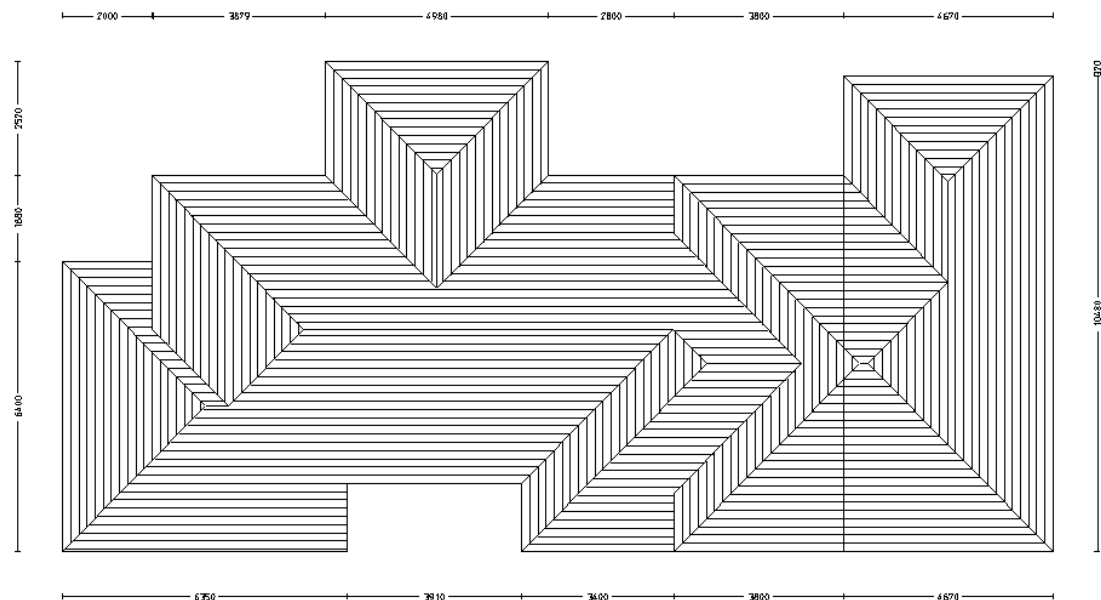
It is a good idea to save here.

*Information in this note is applicable to Applicad's Steep Roof Products:
Sorcerer, Roof Magician and Roof Wizard.*

Now we need to draw up the second roof. Select **Track-Outline** and press **F2** to go to the **Inline** menu. From here select **Dist** and select eave line **C** where shown. You will then be asked to enter a distance along the eave line, **enter in 2800**, as this is where the second roof starts. From here draw up the second roof as normal L shaped roof, ensuring that you set the eave height to the required height. Your roof should look similar to the following.



From here we use the command **Mod-Roof | Advanced | Intersect-Planes**. The software will then intersect all the roof planes giving you the following result.

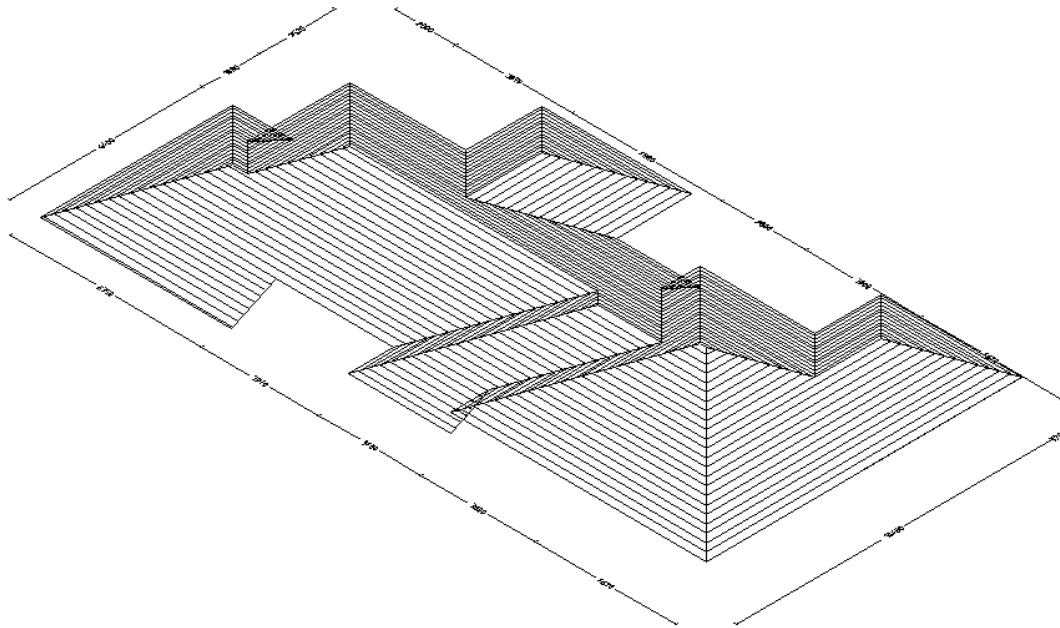


One more thing left to do and that is to delete the unwanted gable end in the middle of our roof. First of all we need to delete the plane tag associated with it. The easiest way to do this is to go to **CAD | Surface | Plane | Delete** and drag a box around the gable end, right click the mouse and confirm the delete. When you have done that go to the normal **delete** from the main menu and delete the unwanted lines. There will be three of them. That completes our job.

Tips and Tricks

3 of 3

Items drawn from Applicad's Customer Service file



*Information in this note is applicable to Applicad's Steep Roof Products:
Sorcerer, Roof Magician and Roof Wizard.*