

Tips and Tricks

1 of 2

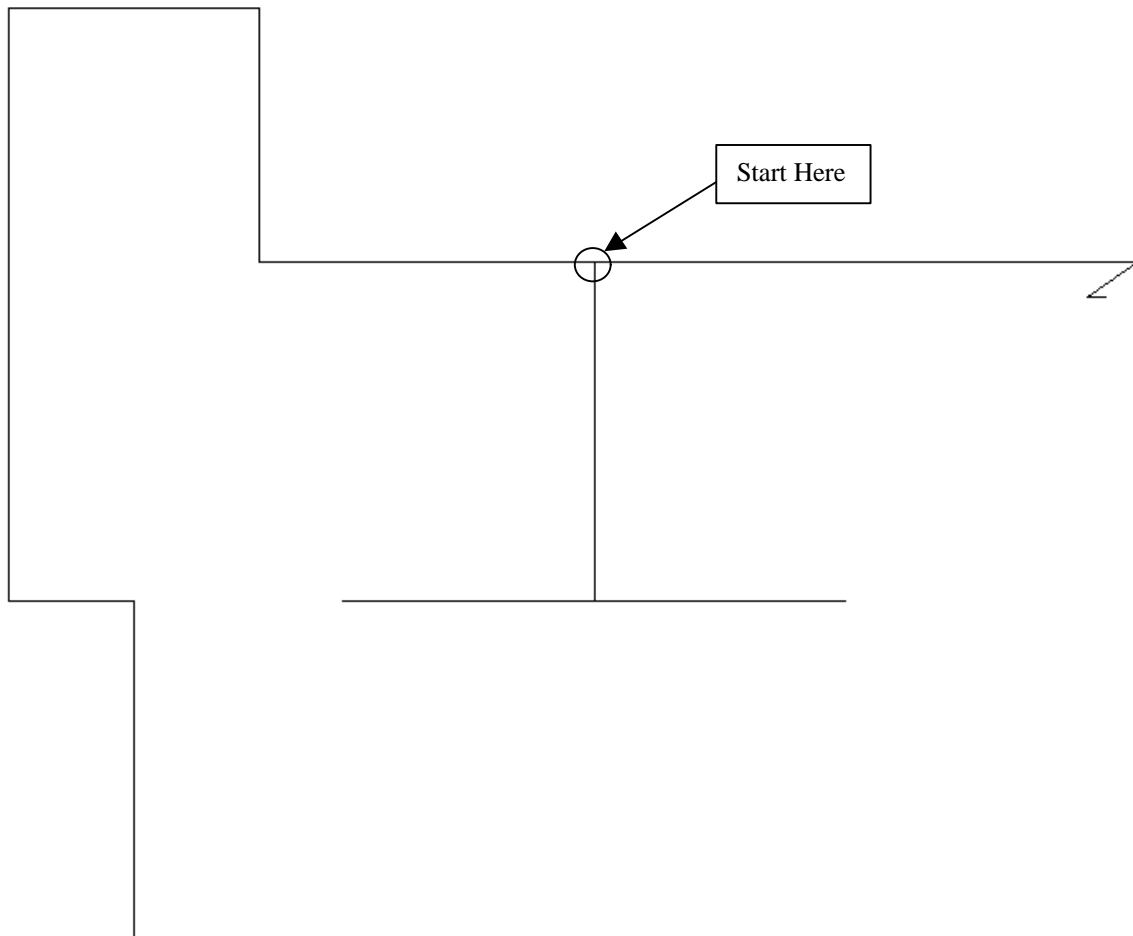
Items drawn from Applicad's Customer Service file

Number: 8

Objective: Create an internal box gutter

**Commands used: Merge-Planes
Set-Display
Cha-Line-Type**

First of all draw up the wall lines similar to below

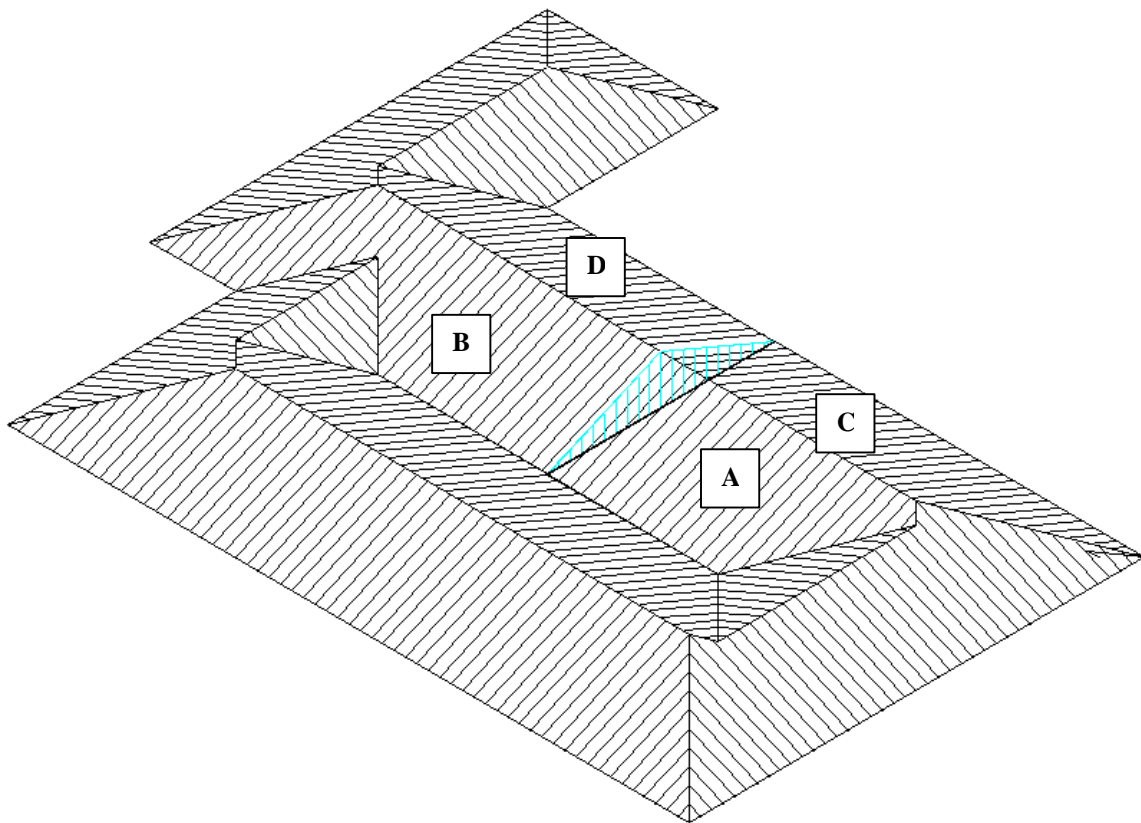


Please note that the dimensions used are not from the original plan.

To do this, start where shown and go down 3000, right 3000, down 1, left 6000, up 1, right 2999, up 3000, left 4000, up 3000, left 3000, down 7000, right 1500, down 4000, right 12000, then close square.

As with the previous drawing ensure that you overhangs are set to zero and make the two walls facing each other gable ends. The reason why we draw it up using 1mm gaps is so the software will draw up the correct valley lines, without the accuracy of the overall estimate changing enough to really make a noticeable difference.

*Information in this note is applicable to Applicad's Steep Roof Products:
Sorcerer, Roof Magician and Roof Wizard.*



As with the previous roof use the **Mod-Roof | Advanced | Merge-Planes** command and merge plane **A** with plane **B**, and plane **C** with plane **D**. Then delete the gable end and its entities as explained earlier.

Now to put in the box gutter. First turn off the wall lines by selecting **Utilities | Set-Display** and set **Walls** to **No**. Next select the **Utilities | Cha-Line-Type** command and select the fascia line where the box gutter will be. When you have put the box gutter on, make sure you change the opposite fascia line to **None**, also using the **Cha-Line-Type** command.