



Sorcerer and Warlock

Advanced Software for Roof and Wall Design and Estimating

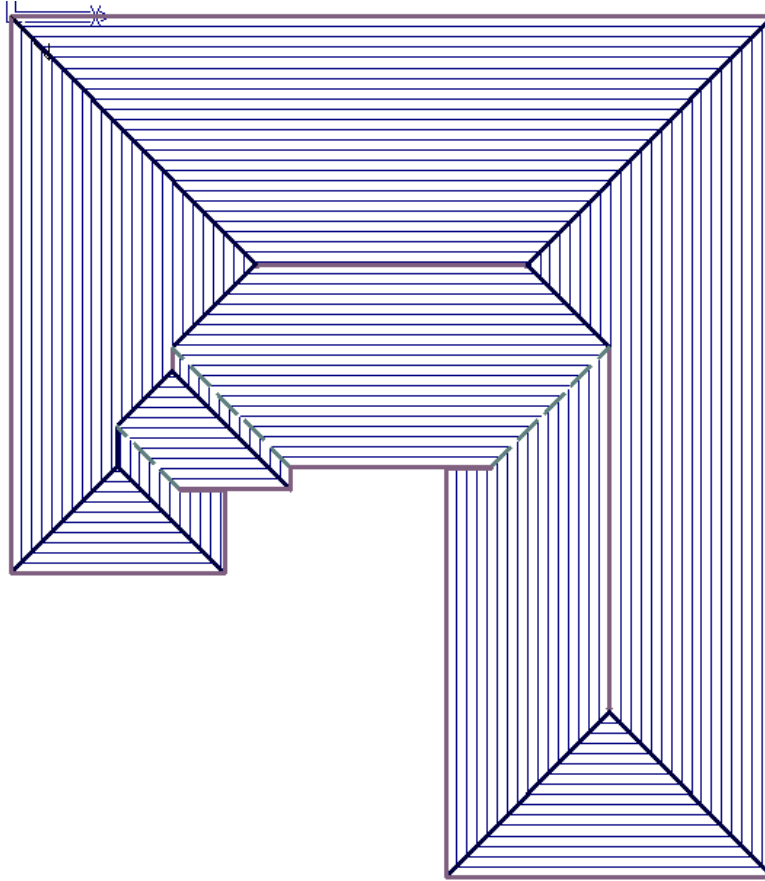
Tutorial – Barge Lines #2

Revision: 1.0 – 20 April 2010

English Units / Feet-Inches or Metric

Tutorial

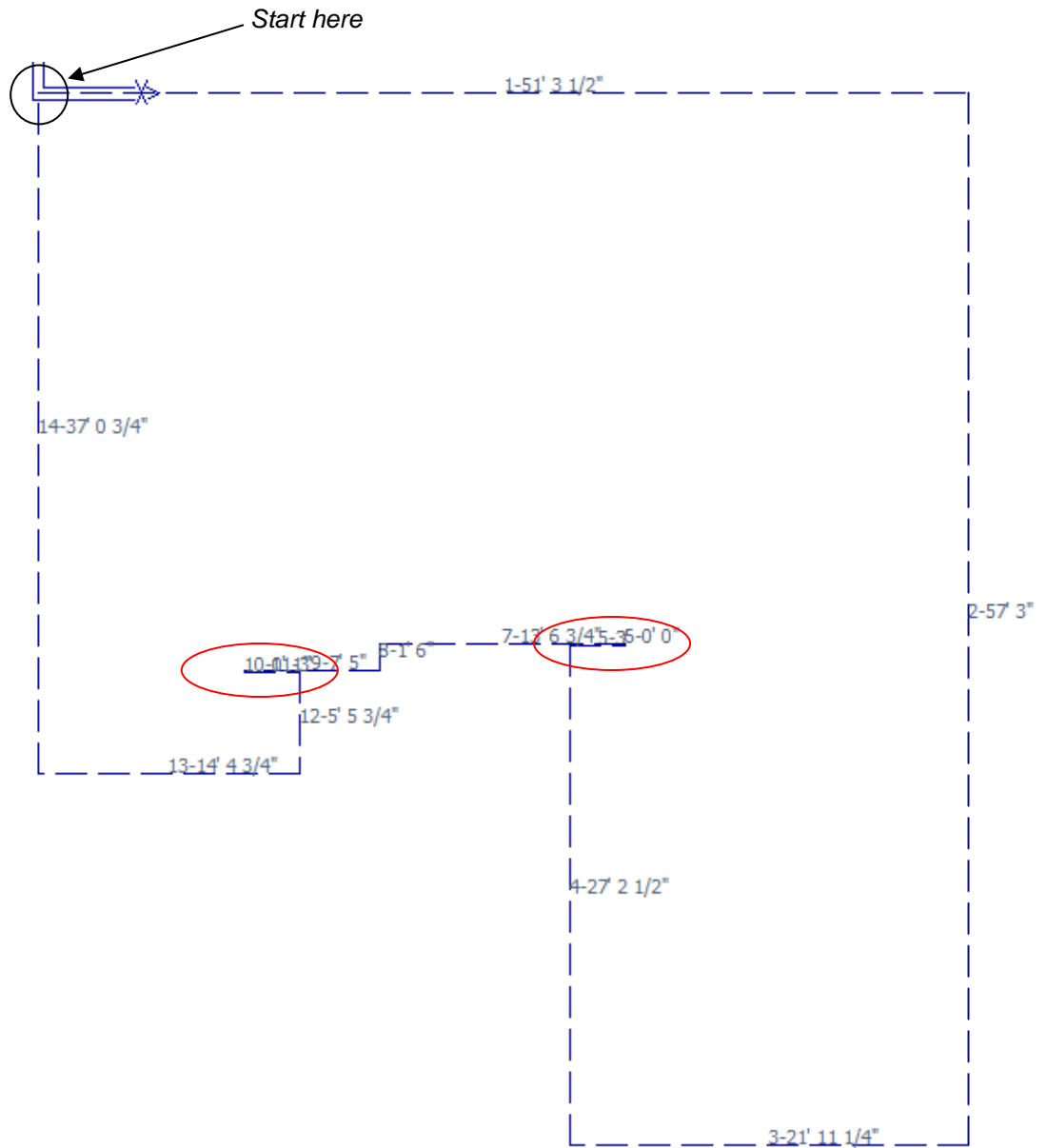
The purpose of this exercise is to develop the final roof shape as shown here:



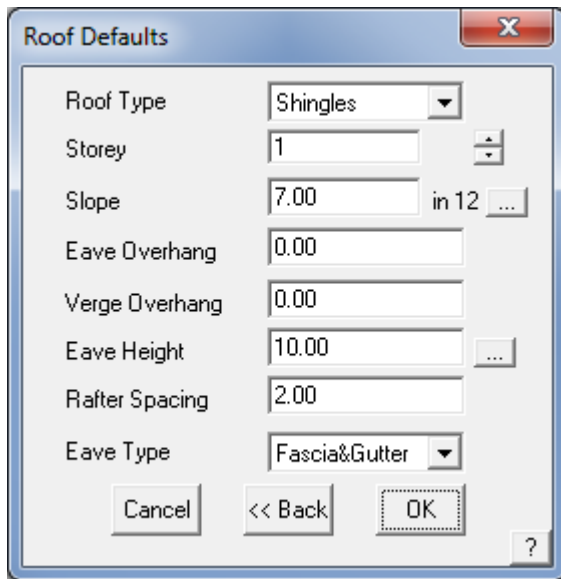
1. Draw your wall outline taking account of the need for barge lines. Subtract the length of eave that is tucked under the front roof, and add this later using **Mod-Roof > Extend Barge**.

NB - With the barge lines function, the outline must be started two points away and also that the total distance up a rake or barge line, is equal to the total distance down (or you get a sloping eave line).

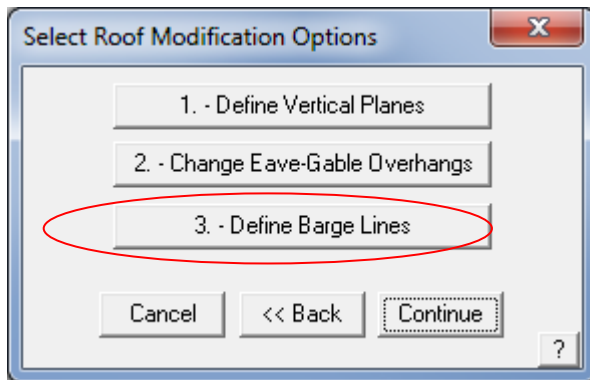
- In this case the outline will look like this: (also add the 1" line up and 1" line down to force the software to consider the barge as a barge (rake)).



- Remember to close square so that you can check the wall measurements against the plan) and then set the pitch and overhang. It is easier to do these roof shapes (with barge lines) with zero eave overhang. If you have a plan with wall measurements, then add the overhang to the line lengths.



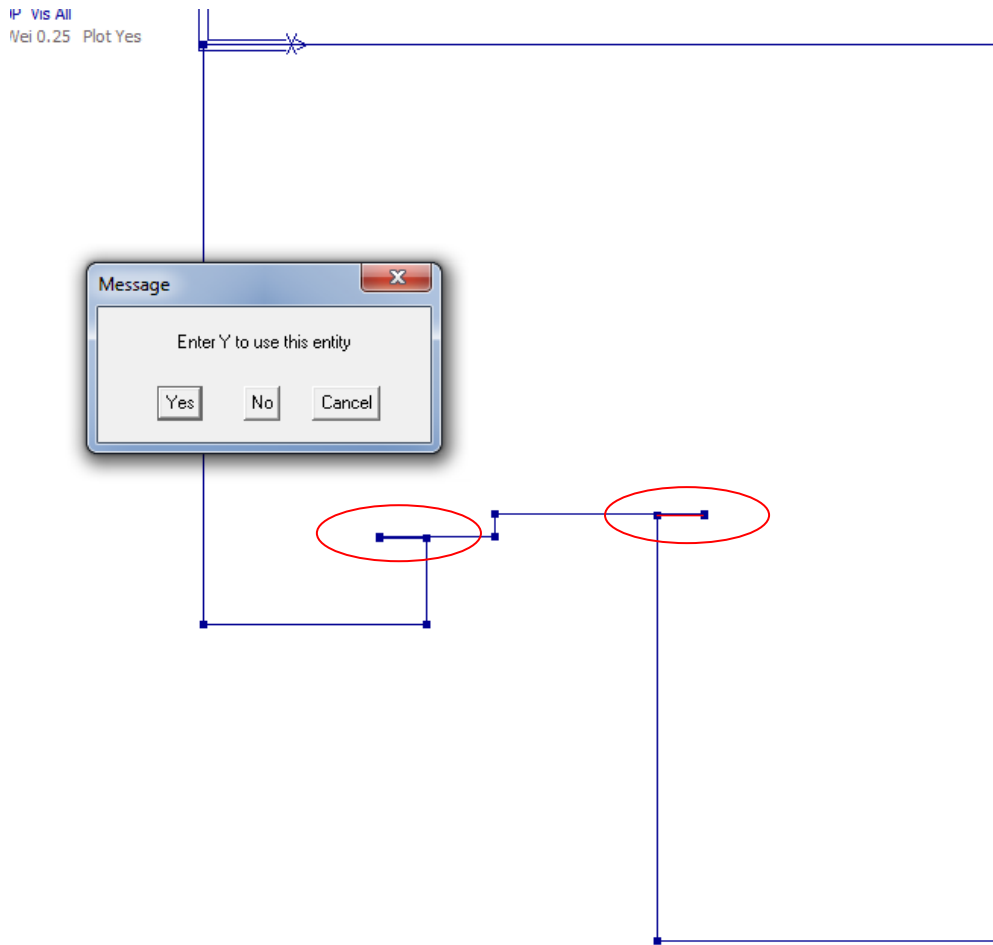
4. If you have gable ends select “Define Vertical Planes” – this is important as these steps (Roof Modification Options) must be done in order. If you don’t do them in order they cancel each other out. Now select the **Define Barge Line** option and select the two short lines that will be barge lines. You may also know them as rake lines.



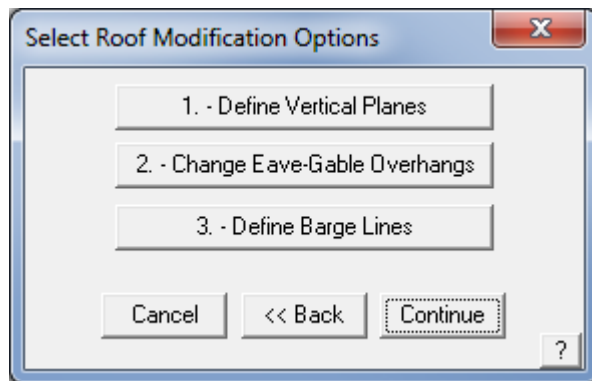
5. You usually have at least two barge lines, one going up and one going down. Select each barge line in turn and observe that the eave height at the corner is displayed. Do not select them the lines more than once.

Notice also that in the prompt area, the direction of the barge line is displayed, ie a barge line up or a barge line down.

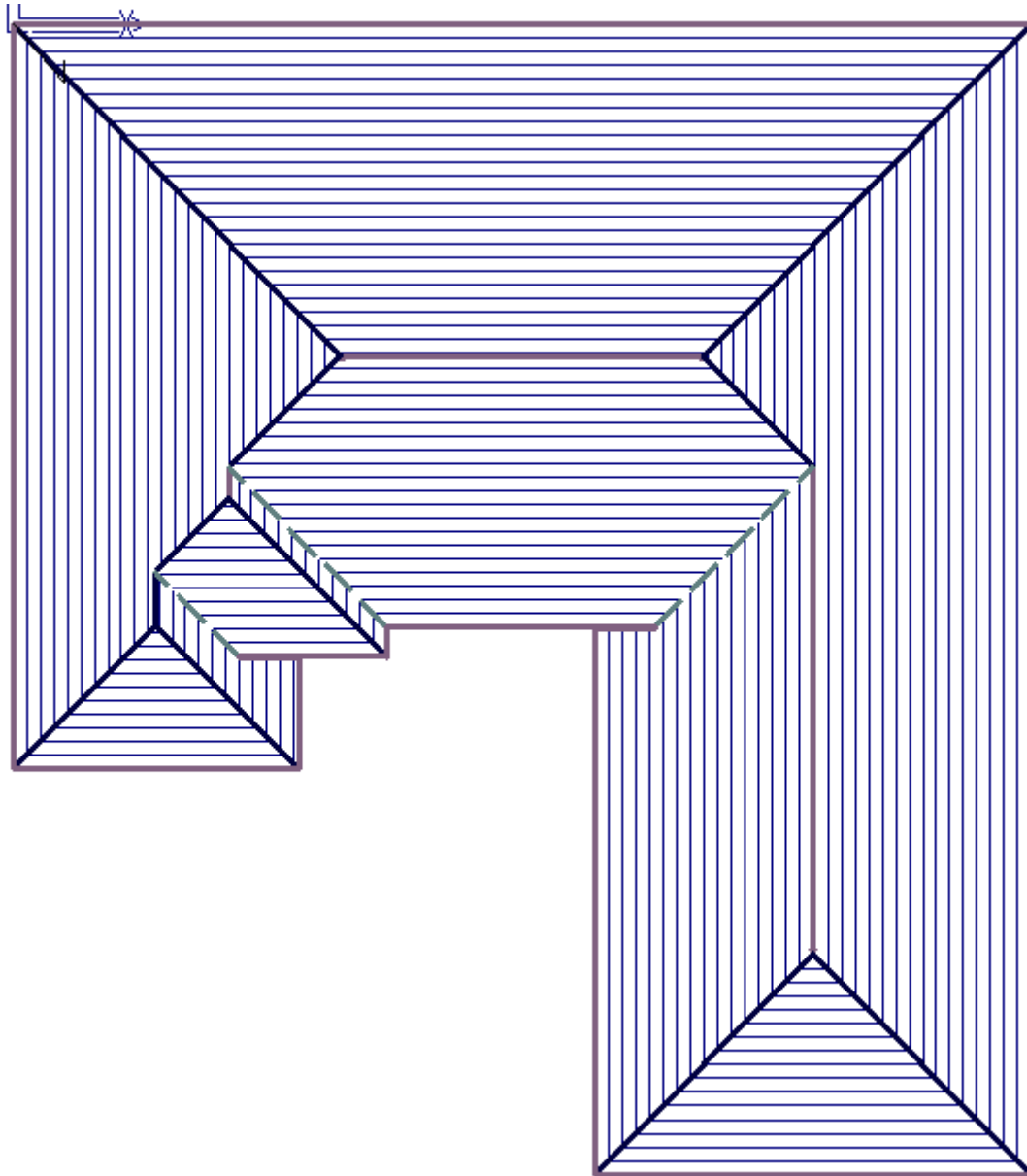




6. Once you have selected your barge lines, right click to finish. Now select **Continue** to finish.

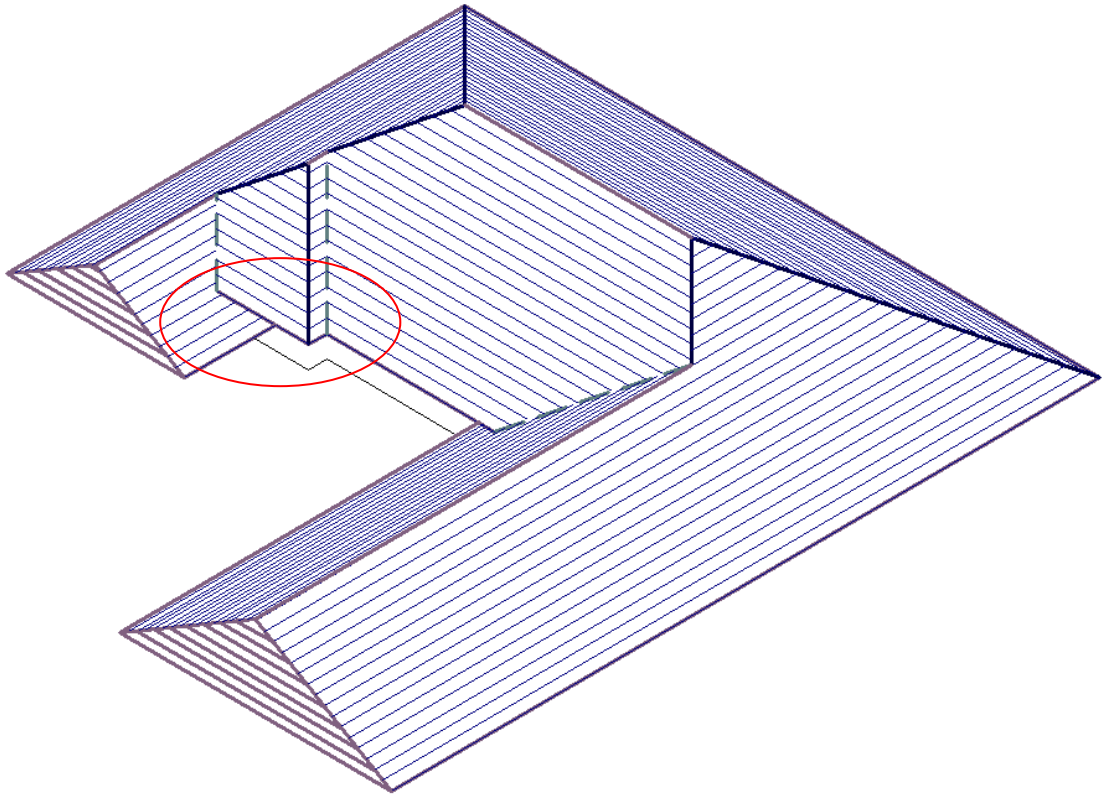


7. Your roof will be created as displayed below:



8. Now if you need to extend the barge lines under the adjacent eave, select **Mod-Roof > Extend Barge**.

Note the change to the eave tuck under as shown below.



That's it. Now use the checking tools and apply your roof material.

End