



Sorcerer and Warlock

Advanced Software for Roof and Wall Design and Estimating

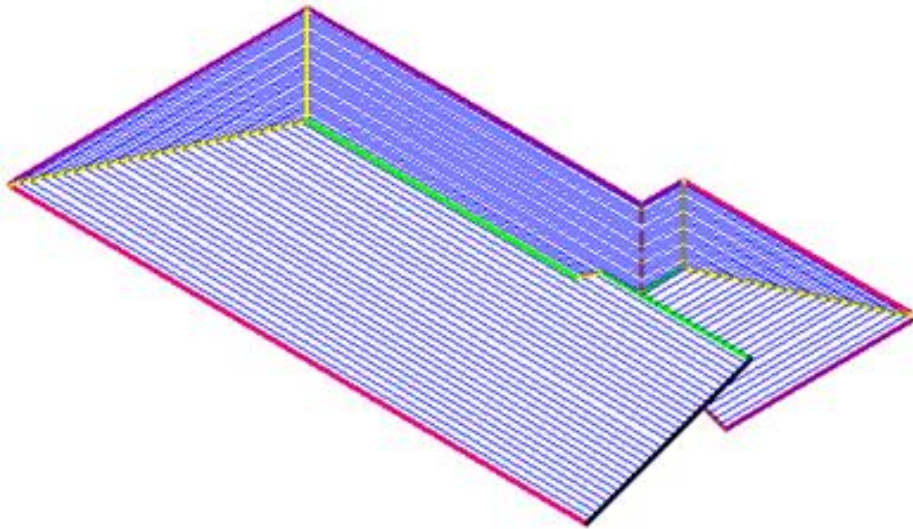
Tutorial – High Set Ridge

Revision: 1.0 – 20 April 2010

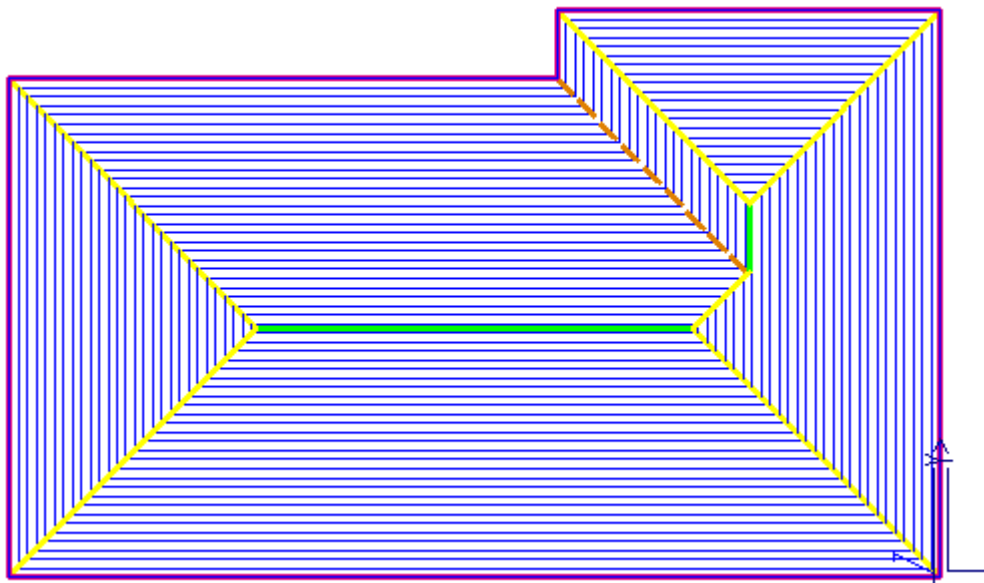
English Units / Feet-Inches or Metric


Tutorial



The purpose of this tutorial is to create the roof geometry as shown below, with a high set ridge line at the front.

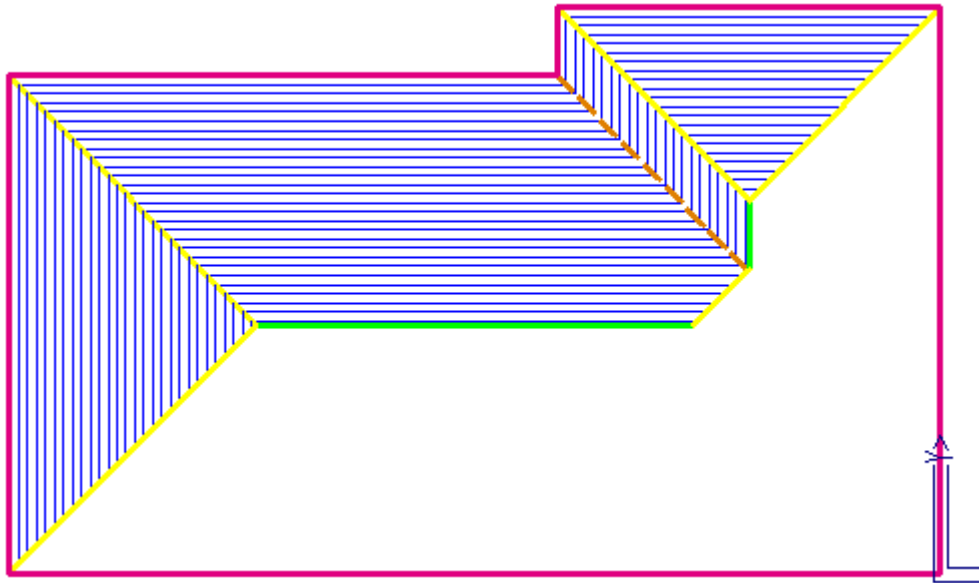



1. Start off with the basic L-Shaped roof using the dimensions that suit your roof shape.

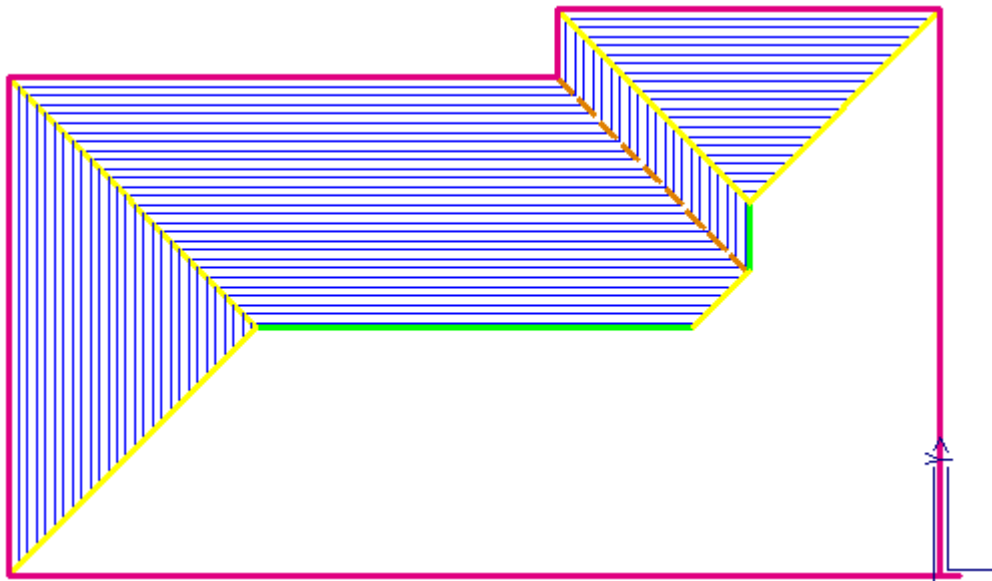



2. Then, delete the stuff we know we don't need (planes, and lines), knowing that we're about to embark on reconstruction using the **Smartlines** functions 

3. It is advisable to turn off wall lines at this time because they can confuse you with too many lines – **Tools > Set Display**  .

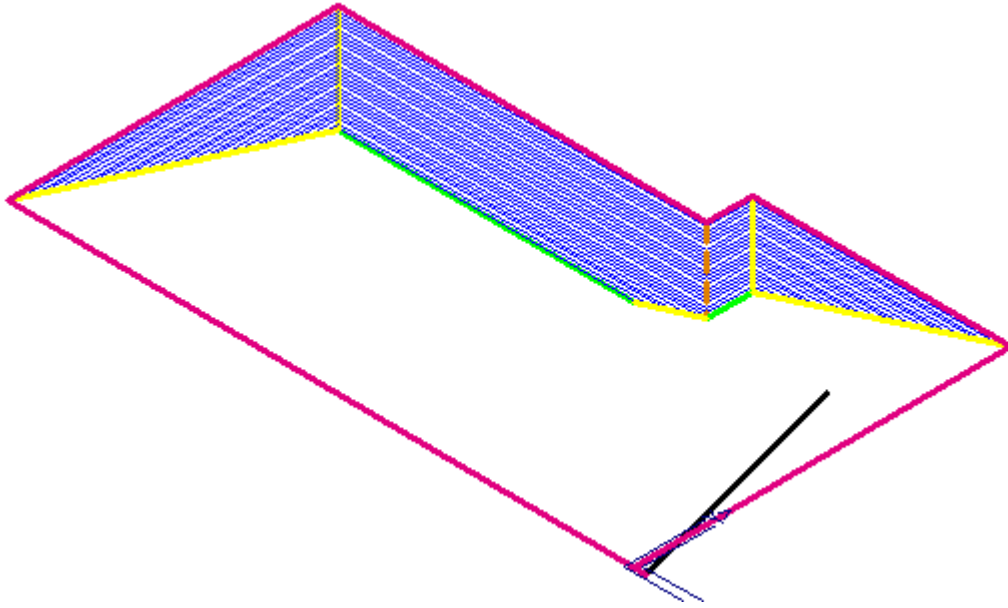



4. Next, trim the eave line to extend it out to where we want it. Use the Smartlines > Trim-to-length option . When we do this, it allows us to enter the required line length.

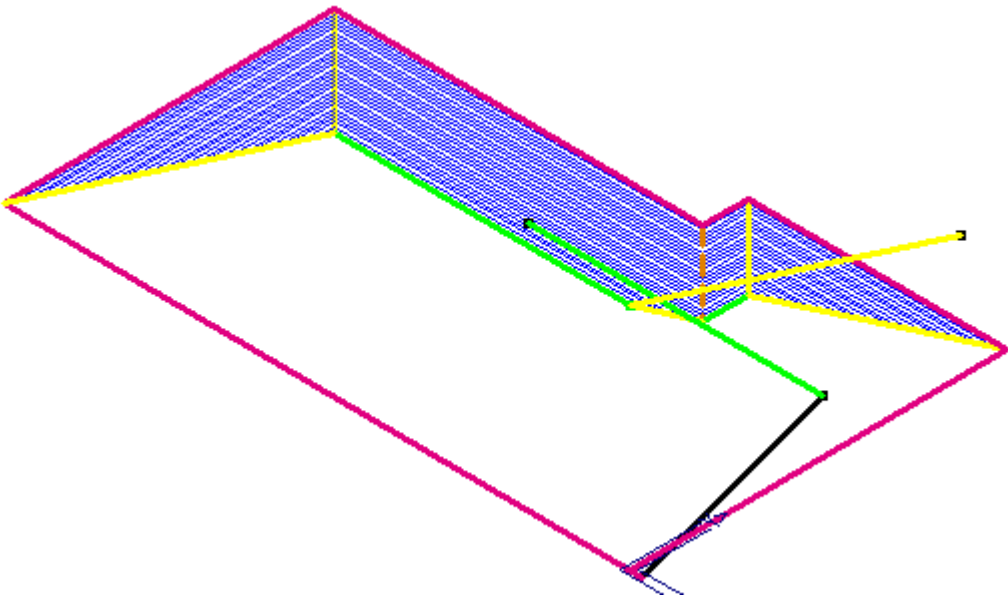


5. Next draw a new gable end up using the Smartlines option  Insert-Freehand. I snap to the end of the new line (using middle mouse button) and then type in iy(*length*), (incremental length, in the Y axis) which is the end of the line and select Gable as a

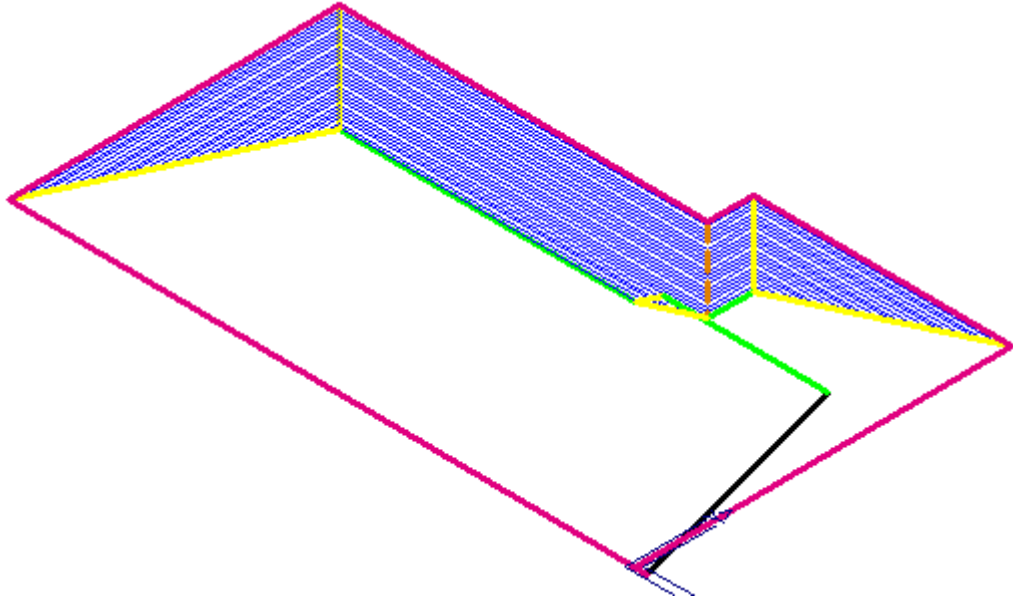
linetype and then 20 degree pitch.




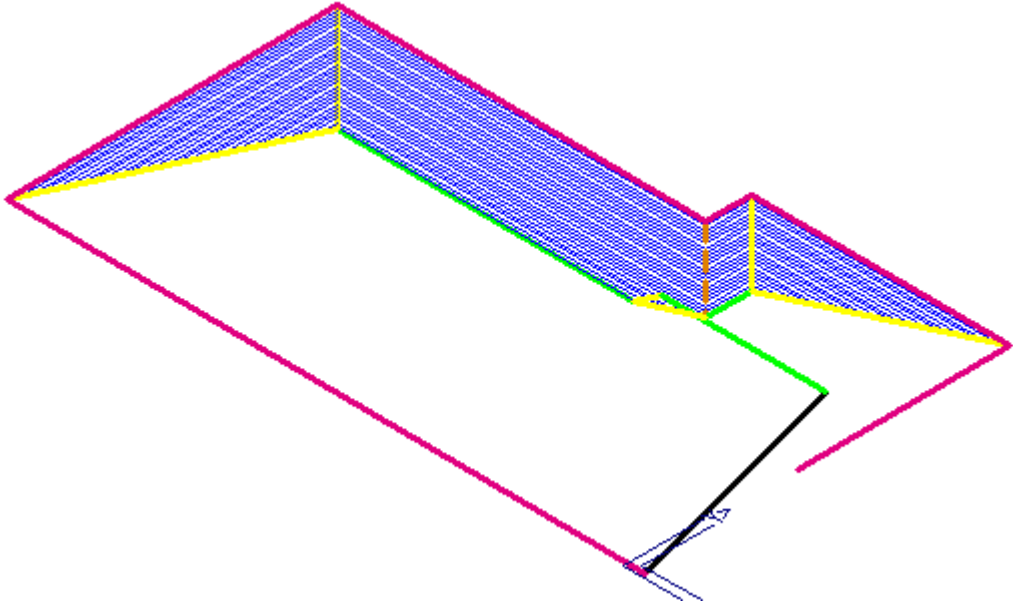
6. Using the Copy-Line command,  I then copy the Ridge and a Hip, snapping them to the required place at the end of existing lines (snap with middle mouse button).




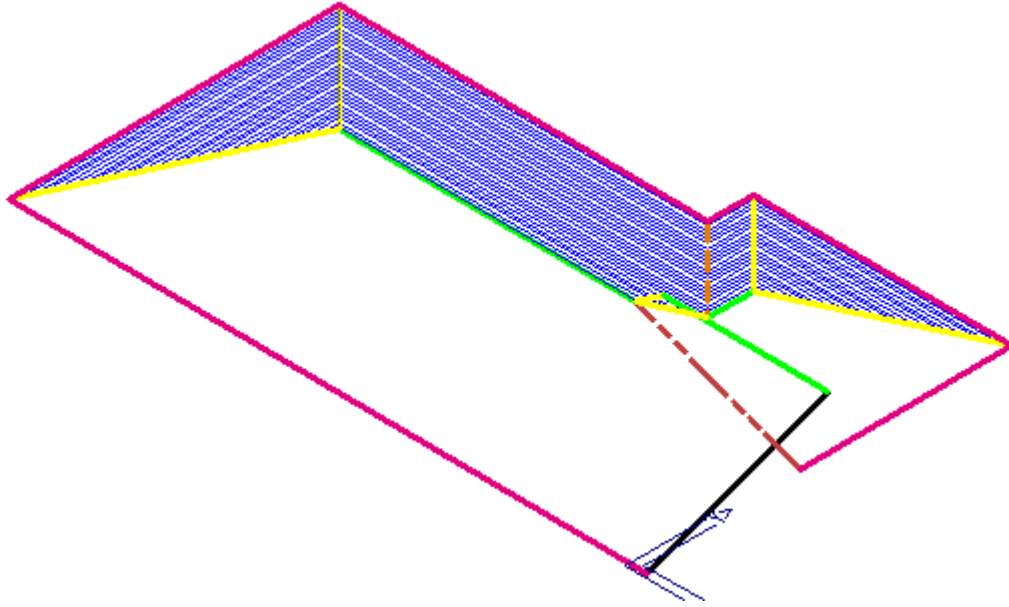
7. ...and then trim them up using the Smartlines > Trim-to-Corner  option.




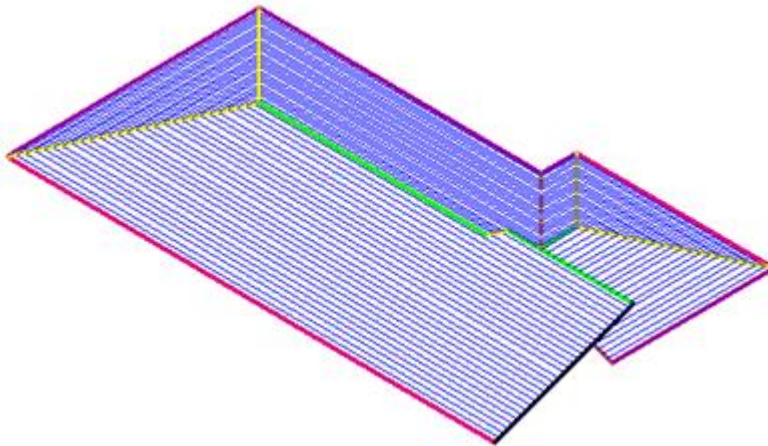
8. Then, using the Trim-to-ZLine option , we trim the eave back to directly below the longer ridge...

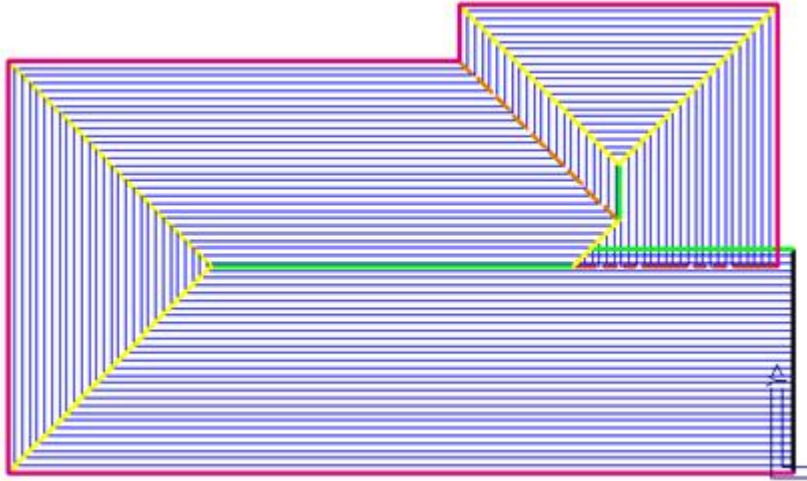


9. ...and then draw a freehand line  to the apex and make it an Apron



10. Finally, we add all the planes back in using the Insert-Plane  command and Bob's your Uncle!





That's it.

Now use the checking tools and apply your roof material to complete your quotation.

End