

applicad

Tips and Tricks - Number: 32

Objective: Splitting panels over purlin's or battens to apply skylights.

Step 1 - Defining Purlin or batten

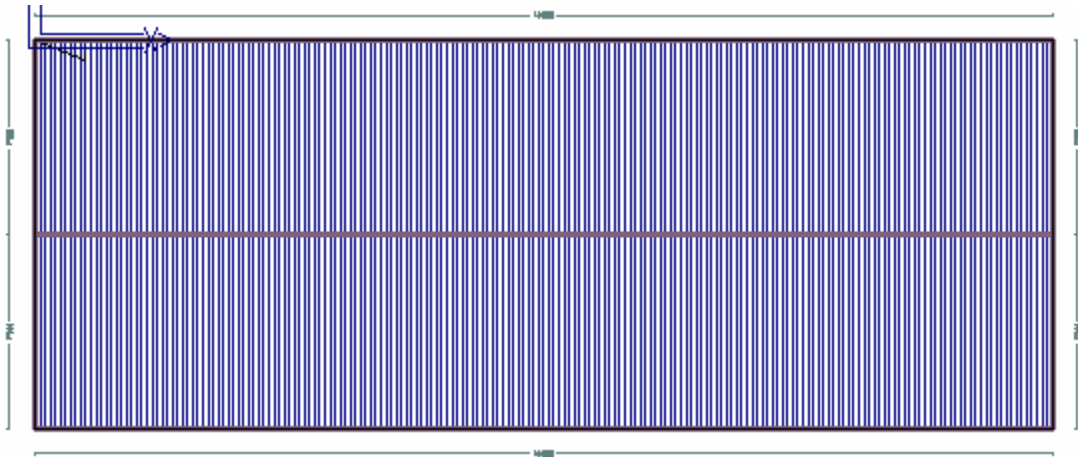
If your purlin or batten hasn't been defined previously, Create them in **Materials** > **Flashing** as per the following example.

The screenshot shows a dialog box titled "Define flashing (rec = 96 of 102)". The dialog contains the following fields and controls:

- Type of flashing: Batten (dropdown menu)
- Manufacturer: BlueScope Lysaght (text field)
- Finish: Zincalume (text field)
- Fastener code: BHFP1265HT17 (text field)
- Description: Lightweight Purlin (text field)
- Product code: RB4075 (text field)
- Fasteners per m: 0.50 (text field)
- Maximum length: 5000.00 mm (text field)
- Costing method: per length (dropdown menu)
- Cost per unit: 11.55 (text field)
- Estimation method: Split total run length into maximum length piece: (dropdown menu)
- Pay Rate Schedule: Default (dropdown menu)

At the bottom of the dialog, there are several buttons: Select, Delete, Add, Update, Cancel, Accessories, Stock-Lengths, and OK.

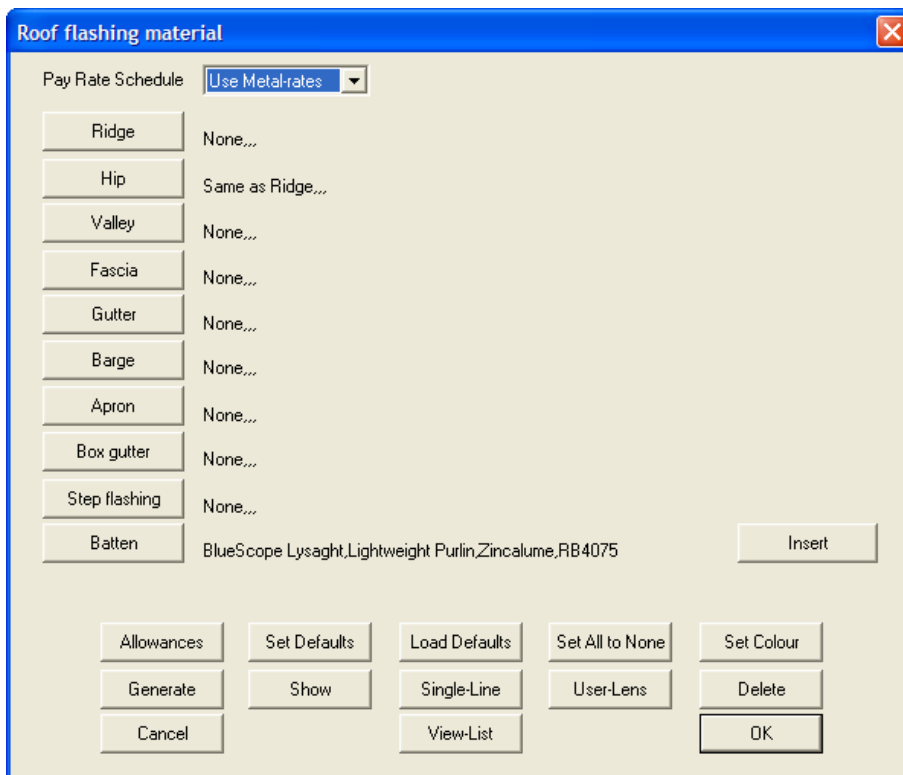
Step 2 - Create a roof as per following example. 40 x 15 Mtrs with gable ends.



Step 3 - Select **Cover > Flashings**

Select **Set All To None**

Select the **Batten** button and select your created purlin.



Then select the **Insert** button.

Batten spacings

Spacing 1	100.00	Spacing 2	900.00	Spacing 3	900.00
Spacing 4	900.00	Spacing 5	900.00	Spacing 6	900.00
Spacing 7	900.00	Spacing 8	900.00	Spacing 9	900.00
Spacing 10	900.00	Spacing 11	900.00	Spacing 12	900.00
Spacing 13	900.00	Spacing 14	900.00	Spacing 15	900.00
Spacing 16	900.00	Spacing 17	900.00	Spacing 18	900.00
Spacing 19	900.00	Spacing 20	900.00	Spacing 21	900.00
Spacing 22	900.00	Spacing 23	900.00	Spacing 24	900.00
Spacing 25	900.00	Spacing 26	900.00	Spacing 27	900.00
Spacing 28	900.00	Spacing 29	900.00	Spacing 30	900.00

Apply to straight Verandahs Yes Apply to ridges Yes
Apply to bullnose Verandahs Yes Apply to hips Yes
Apply to aprons Yes
Apply to valleys Yes

Apply-All Delete-All Delete Apply-Selected

Continue Change Batten Reset

If you need to reset batten spacing's, select the **Reset** button and reset spacing to what you require, in this example, reset to 1200 then change the first spacing to 100.00

Batten spacings

Spacing 1	100.00	Spacing 2	1200.00	Spacing 3	1200.00
Spacing 4	1200.00	Spacing 5	1200.00	Spacing 6	1200.00
Spacing 7	1200.00	Spacing 8	1200.00	Spacing 9	1200.00
Spacing 10	1200.00	Spacing 11	1200.00	Spacing 12	1200.00
Spacing 13	1200.00	Spacing 14	1200.00	Spacing 15	1200.00
Spacing 16	1200.00	Spacing 17	1200.00	Spacing 18	1200.00
Spacing 19	1200.00	Spacing 20	1200.00	Spacing 21	1200.00
Spacing 22	1200.00	Spacing 23	1200.00	Spacing 24	1200.00
Spacing 25	1200.00	Spacing 26	1200.00	Spacing 27	1200.00
Spacing 28	1200.00	Spacing 29	1200.00	Spacing 30	1200.00

Apply to straight Verandahs Yes Apply to ridges Yes
Apply to bullnose Verandahs Yes Apply to hips Yes
Apply to aprons Yes
Apply to valleys Yes

Apply-All Delete-All Delete Apply-Selected

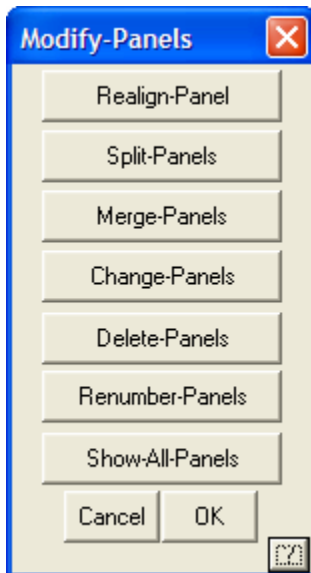
Continue Change Batten Reset

Select **Apply all** to apply the battens then **Continue** and then select **Generate** to get a purlin cutting list.

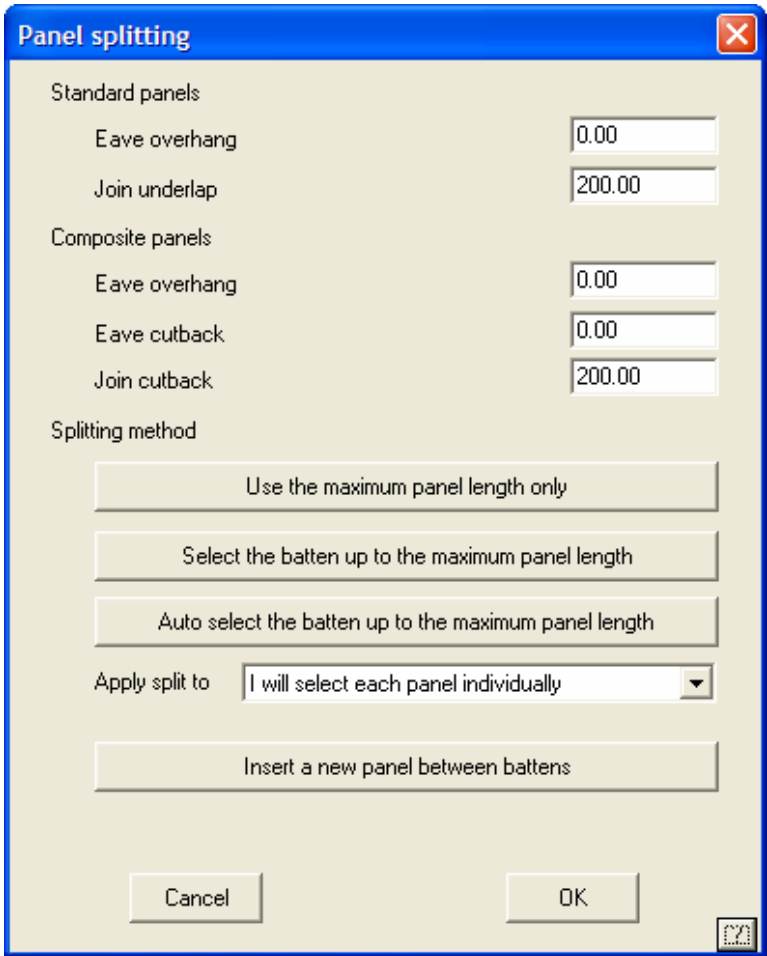
Step 4 - Select **Estimate > Generate Panel Layout > Generate Panels** and apply a metal panel to your roof. Select Tally-Panels

1-51 [798] 1	1-52 [798] 1	1-51 [798] 1	1-50 [798] 1	1-49 [798] 1	1-48 [798] 1	1-47 [798] 1	1-46 [798] 1	1-45 [798] 1	1-44 [798] 1	1-43 [798] 1	1-42 [798] 1	1-41 [798] 1	1-40 [798] 1	1-39 [798] 1	1-38 [798] 1	1-37 [798] 1	1-36 [798] 1	1-35 [798] 1	1-34 [798] 1	1-33 [798] 1	1-32 [798] 1	1-31 [798] 1	1-30 [798] 1	1-29 [798] 1	1-28 [798] 1	1-27 [798] 1	1-26 [798] 1	1-25 [798] 1	1-24 [798] 1	1-23 [798] 1	1-22 [798] 1	1-21 [798] 1	1-20 [798] 1	1-19 [798] 1	1-18 [798] 1	1-17 [798] 1	1-16 [798] 1	1-15 [798] 1	1-14 [798] 1	1-13 [798] 1	1-12 [798] 1	1-11 [798] 1	1-10 [798] 1	1-9 [798] 1	1-8 [798] 1	1-7 [798] 1	1-6 [798] 1	1-5 [798] 1	1-4 [798] 1	1-3 [798] 1	1-2 [798] 1	1-1 [798] 1
2-1 [798] 1	2-2 [798] 1	2-3 [798] 1	2-4 [798] 1	2-5 [798] 1	2-6 [798] 1	2-7 [798] 1	2-8 [798] 1	2-9 [798] 1	2-10 [798] 1	2-11 [798] 1	2-12 [798] 1	2-13 [798] 1	2-14 [798] 1	2-15 [798] 1	2-16 [798] 1	2-17 [798] 1	2-18 [798] 1	2-19 [798] 1	2-20 [798] 1	2-21 [798] 1	2-22 [798] 1	2-23 [798] 1	2-24 [798] 1	2-25 [798] 1	2-26 [798] 1	2-27 [798] 1	2-28 [798] 1	2-29 [798] 1	2-30 [798] 1	2-31 [798] 1	2-32 [798] 1	2-33 [798] 1	2-34 [798] 1	2-35 [798] 1	2-36 [798] 1	2-37 [798] 1	2-38 [798] 1	2-39 [798] 1	2-40 [798] 1	2-41 [798] 1	2-42 [798] 1	2-43 [798] 1	2-44 [798] 1	2-45 [798] 1	2-46 [798] 1	2-47 [798] 1	2-48 [798] 1	2-49 [798] 1	2-50 [798] 1	2-51 [798] 1	2-52 [798] 1	2-53 [798] 1

Select **Modify Panels**.

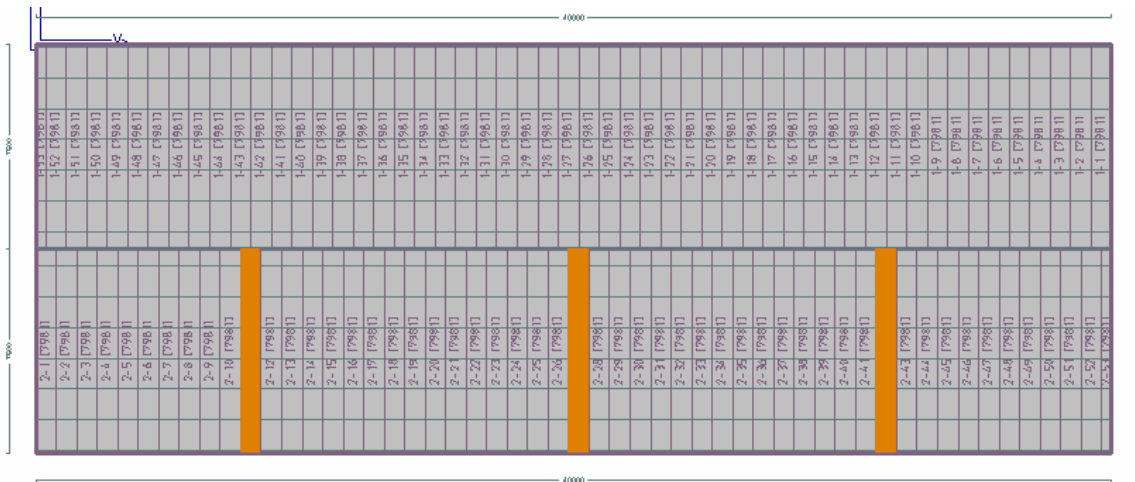


Select **Split-Panels**



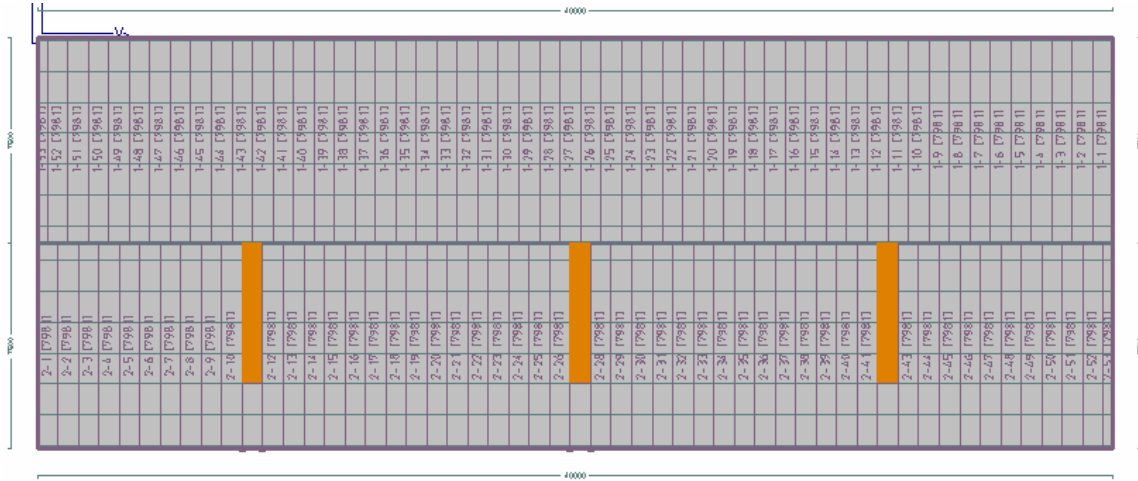
Select **“Select the batten up to the maximum panel length”**

Select the first batten line that you wish to create as your split point and then select the panels that you wish to split. In this case I've selected a lower batten as the first split point.

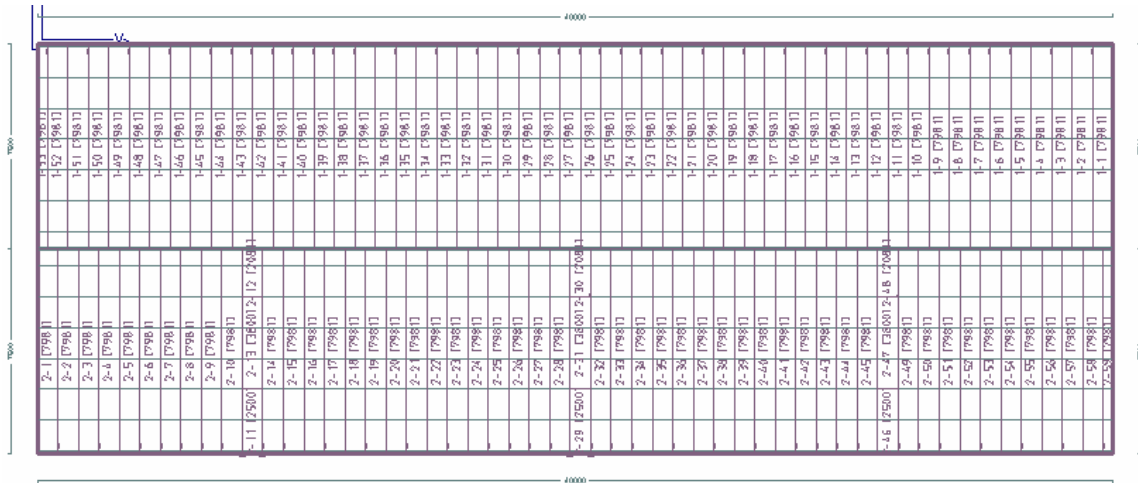


Right click your mouse and accept those entities.

Repeat the process and select the second batten line, in this case, I selected an upper batten then select the same panels as before. Right click your mouse and select those entities.



Close Modify Panels and then select Tally panels again to view the split.



To change the middle panel now into a skylight, select **Modify-Panels** and then **Change-Panels**.

Change panel material to what you wish to be your skylight material. For example a polycarbonate panel which has been created in **Materials > Metal Panels**.

Then select your panels that you wish to be polycarbonate. In this case the middle panel of each panel that I split previously.

2-1 [798.1]	1-13 [988.1]
2-2 [798.1]	1-51 [988.1]
2-3 [798.1]	1-50 [988.1]
2-4 [798.1]	1-49 [988.1]
2-5 [798.1]	1-48 [988.1]
2-6 [798.1]	1-47 [988.1]
2-7 [798.1]	1-46 [988.1]
2-8 [798.1]	1-45 [988.1]
2-9 [798.1]	1-44 [988.1]
2-10 [798.1]	1-43 [988.1]
2-11 [798.1]	1-42 [988.1]
2-12 [798.1]	1-41 [988.1]
2-13 [798.1]	1-40 [988.1]
2-14 [798.1]	1-39 [988.1]
2-15 [798.1]	1-38 [988.1]
2-16 [798.1]	1-37 [988.1]
2-17 [798.1]	1-36 [988.1]
2-18 [798.1]	1-35 [988.1]
2-19 [798.1]	1-34 [988.1]
2-20 [798.1]	1-33 [988.1]
2-21 [798.1]	1-32 [988.1]
2-22 [798.1]	1-31 [988.1]
2-23 [798.1]	1-30 [988.1]
2-24 [798.1]	1-29 [988.1]
2-25 [798.1]	1-28 [988.1]
2-26 [798.1]	1-27 [988.1]
2-27 [798.1]	1-26 [988.1]
2-28 [798.1]	1-25 [988.1]
2-29 [798.1]	1-24 [988.1]
2-30 [798.1]	1-23 [988.1]
2-31 [798.1]	1-22 [988.1]
2-32 [798.1]	1-21 [988.1]
2-33 [798.1]	1-20 [988.1]
2-34 [798.1]	1-19 [988.1]
2-35 [798.1]	1-18 [988.1]
2-36 [798.1]	1-17 [988.1]
2-37 [798.1]	1-16 [988.1]
2-38 [798.1]	1-15 [988.1]
2-39 [798.1]	1-14 [988.1]
2-40 [798.1]	1-13 [988.1]
2-41 [798.1]	1-12 [988.1]
2-42 [798.1]	1-11 [988.1]
2-43 [798.1]	1-10 [988.1]
2-44 [798.1]	1-9 [988.1]
2-45 [798.1]	1-8 [988.1]
2-46 [798.1]	1-7 [988.1]
2-47 [798.1]	1-6 [988.1]
2-48 [798.1]	1-5 [988.1]
2-49 [798.1]	1-4 [988.1]
2-50 [798.1]	1-3 [988.1]
2-51 [798.1]	1-2 [988.1]
2-52 [798.1]	1-1 [988.1]

Right Click your mouse and accept the entities.

Close the **Modify-Panels** box and select **Tally-Panels**. The Drop down box will now show two different panel materials. The **show** button will show where the material is if you select each material in turn and then **show**.

Panel cutting list summary Page 1 of 1 ✖

BlueScope Lysaght, TD48--., Trimdek, Blue Ridge:BR, 0.48, 762.0
BlueScope Lysaght, TD48--., Trimdek, Blue Ridge:BR, 0.48, 762.0
BlueScope Lysaght, FIBPOLYMC, Trimdek, Polycarbonate, 0.80, 762.0
All Materials

Sheet area : 638 m2

Total Roof Area : 638 m2

000.dab : skylights

Purlin length : 631.75 m

Export CSV
Delete
Change
Show
OK

?