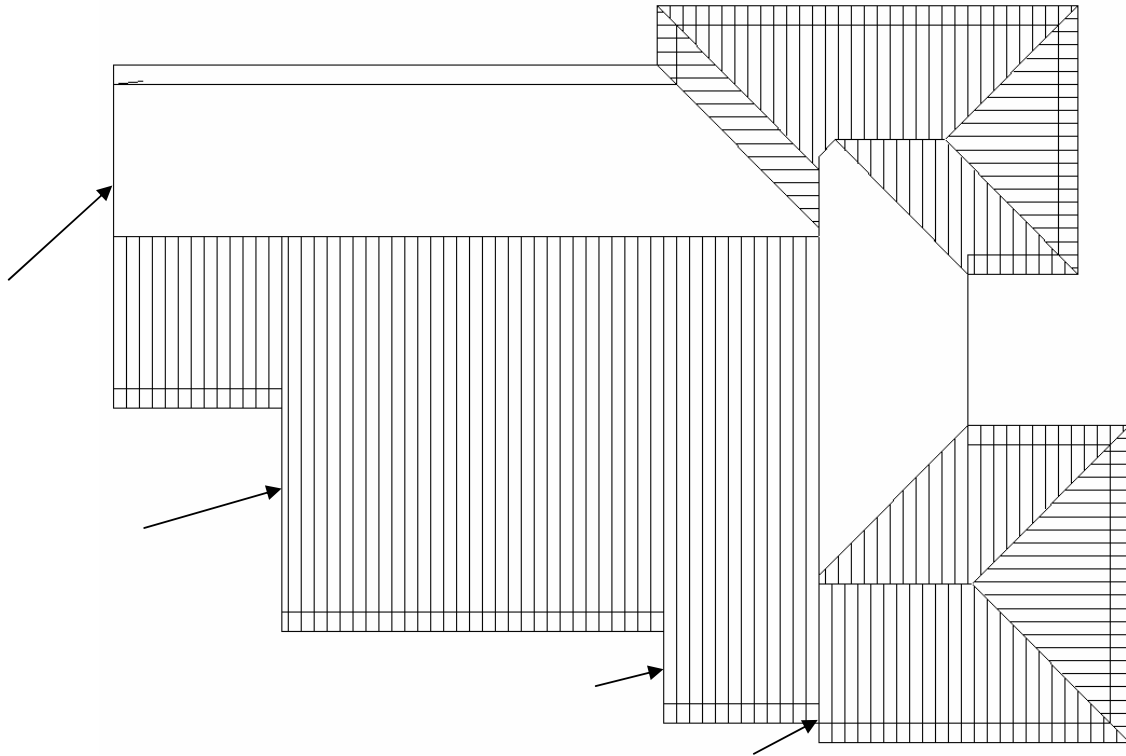
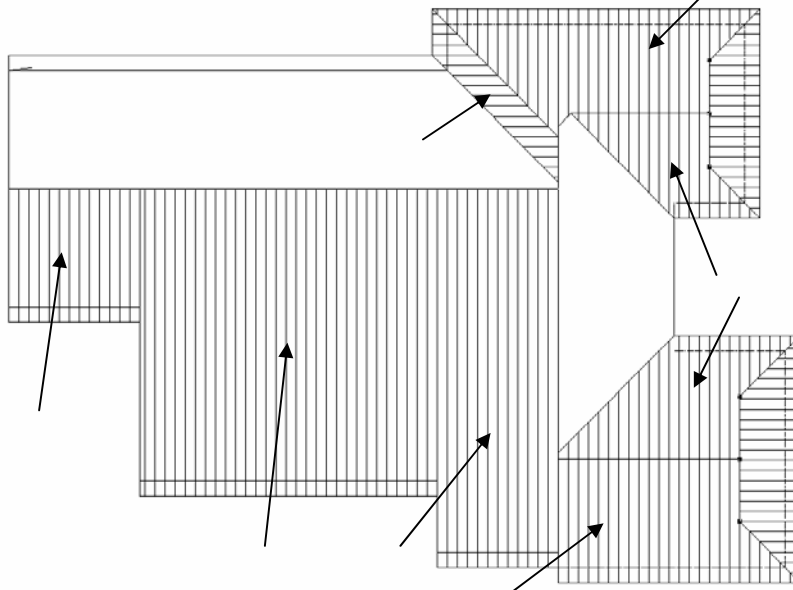


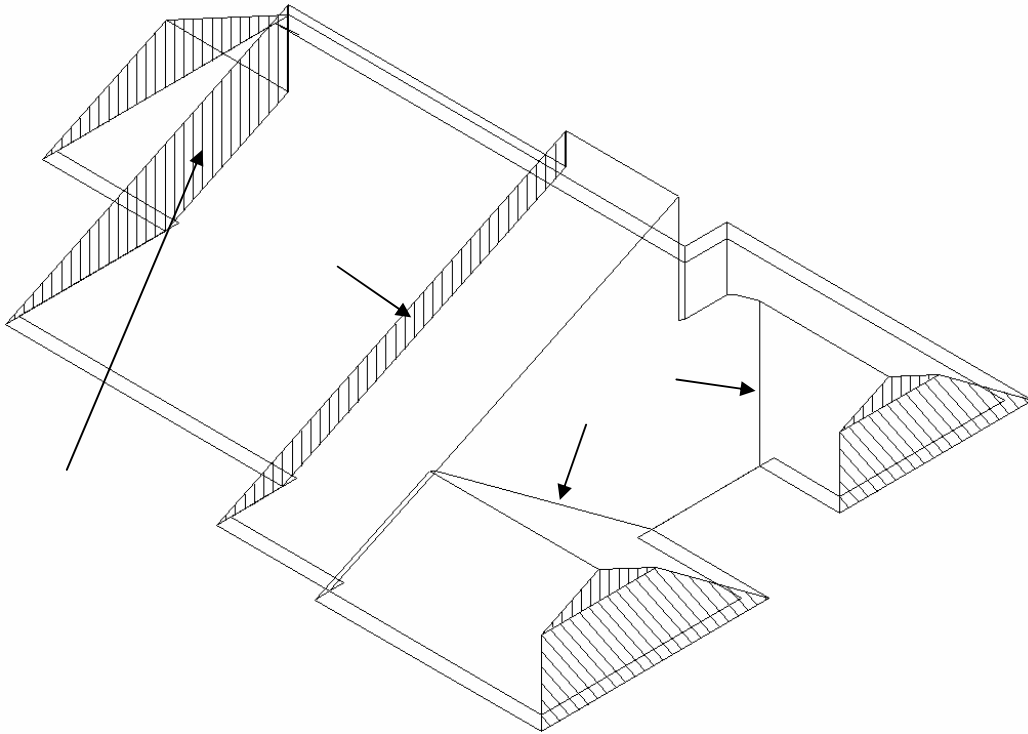
Start by tracking around your wall lines as normal. When you are prompted for gable ends select the **4** gable ends shown below. Then change the eave overhang above the entry to **0**. You will get a number of error messages but just keep clicking continue and you should get something like the following.



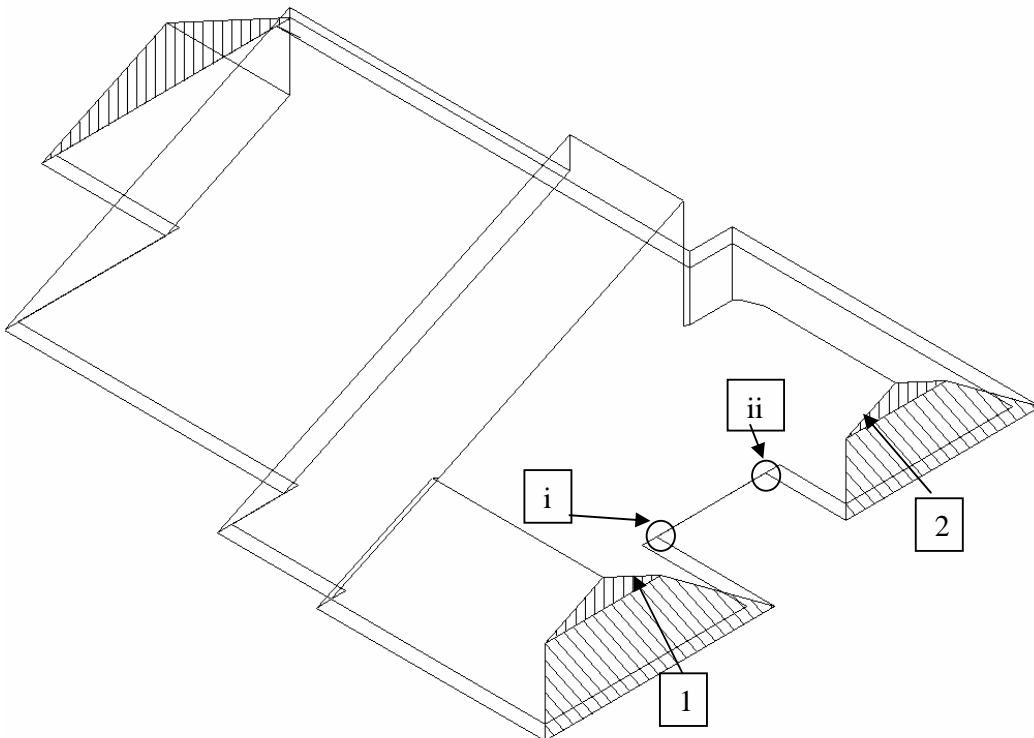
From here put in your **2** dutch gables on the right hand side.



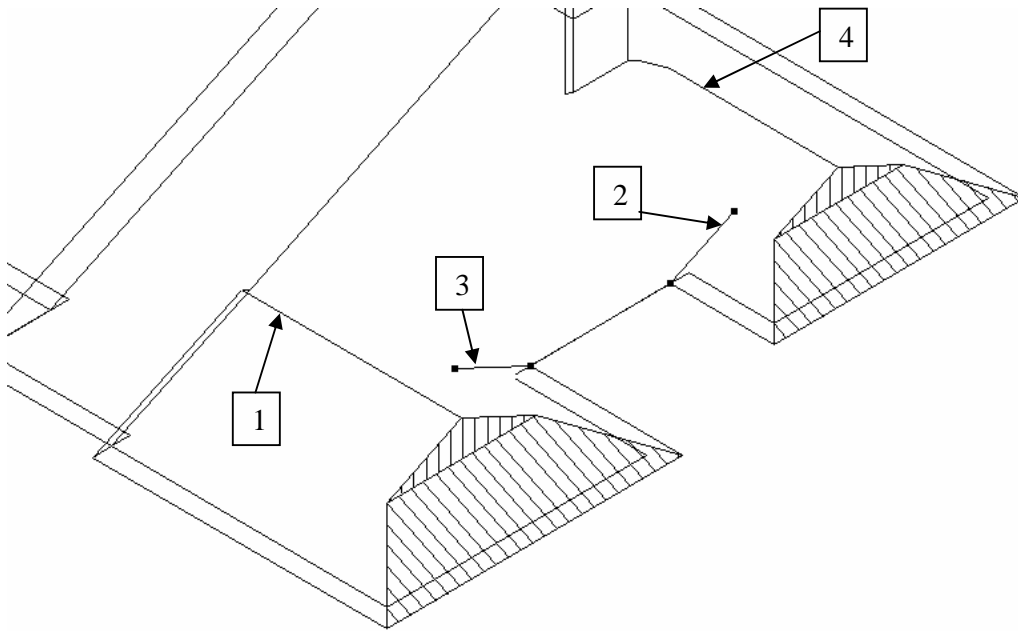
Now go to **Delete** and delete the roof planes shown, then go to an **ISO** view.



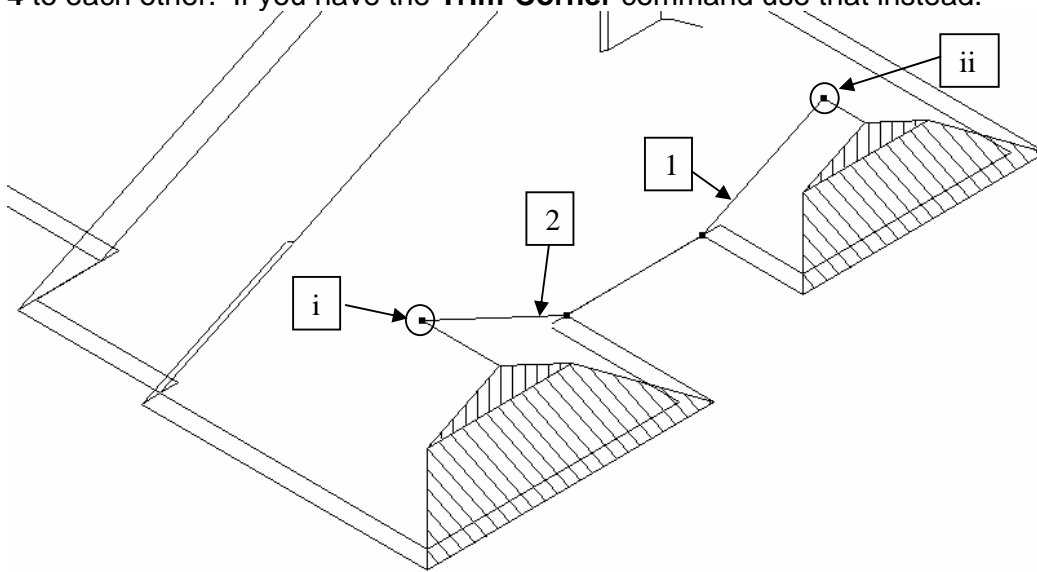
Now delete the **2** gable planes and **2** valley lines shown.



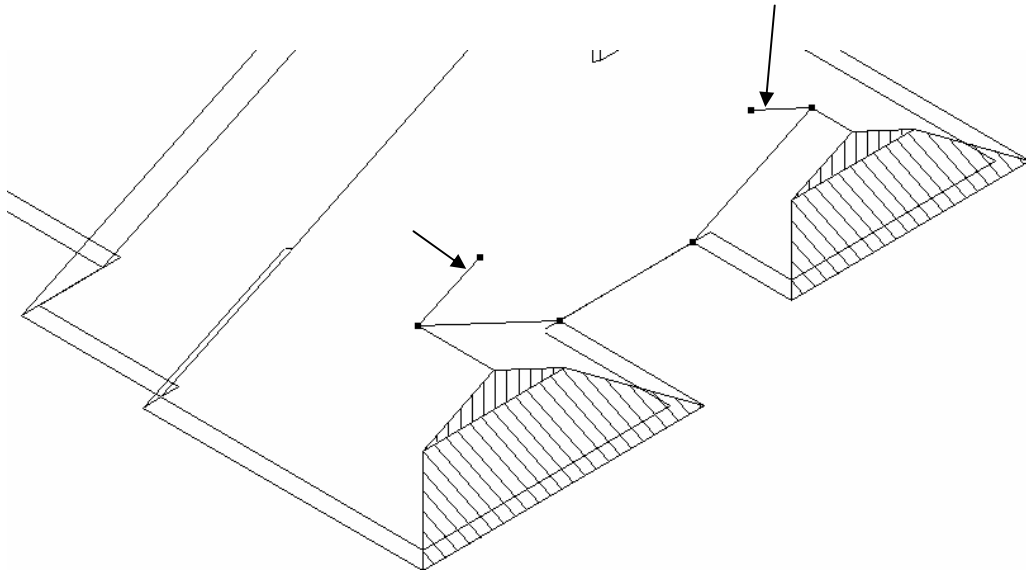
Go to **Mod-Roof | Advanced | Copy-Line** and copy line **1** and **Snap** to point **i**, then copy line **2** and **Snap** to point **ii**.



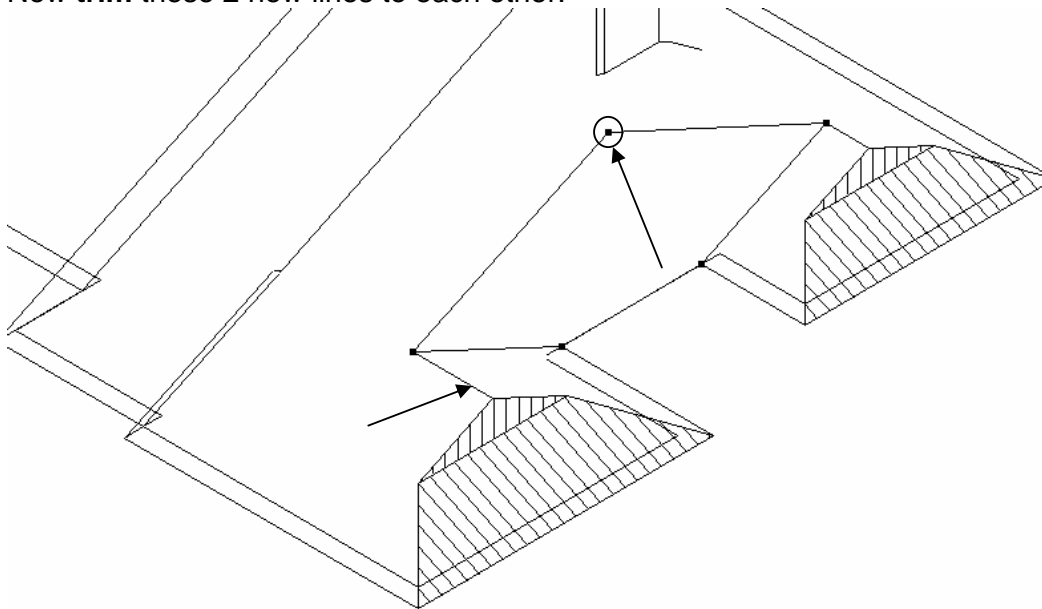
Now go to **Trim-Line** and trim lines **1** and **3** to each other and then lines **2** and **4** to each other. If you have the **Trim-Corner** command use that instead.



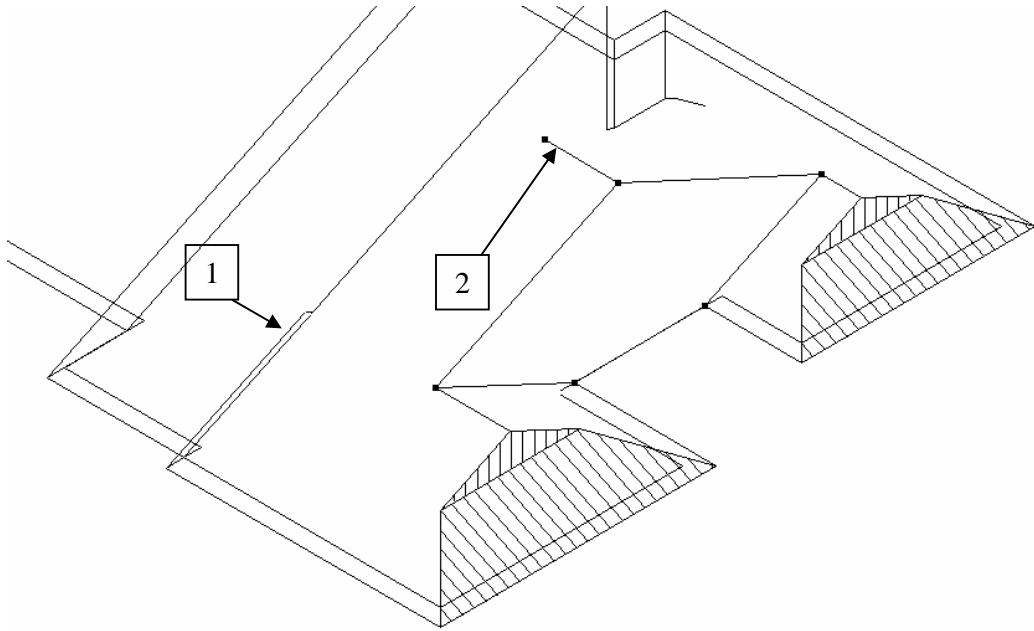
Now go to **Copy-Line** and copy line **1** to point **i** and line **2** to point **ii**.



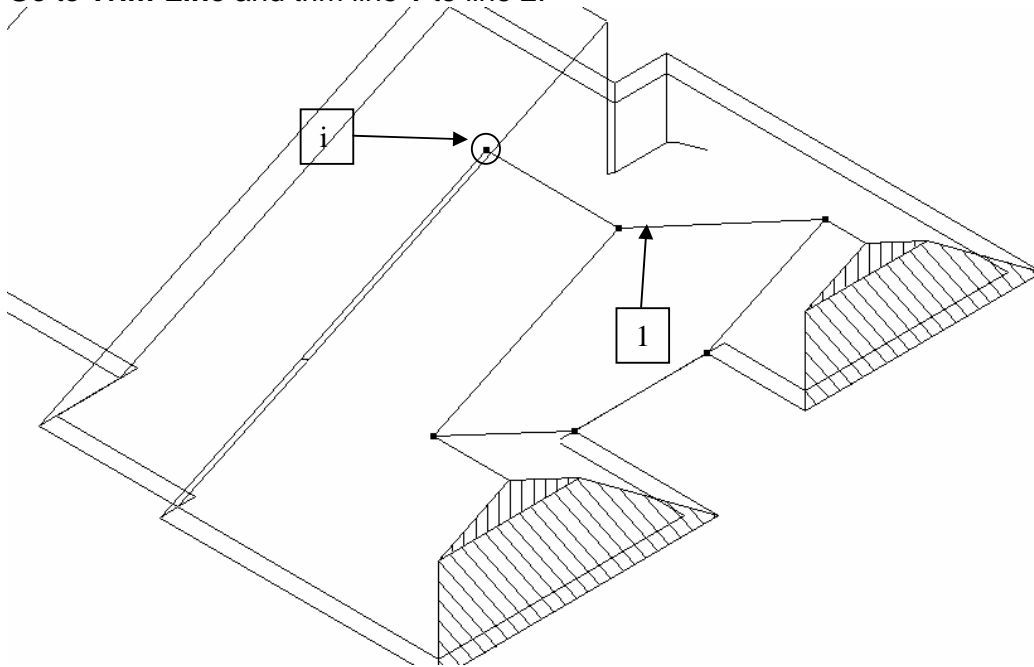
Now **trim** these **2** new lines to each other.



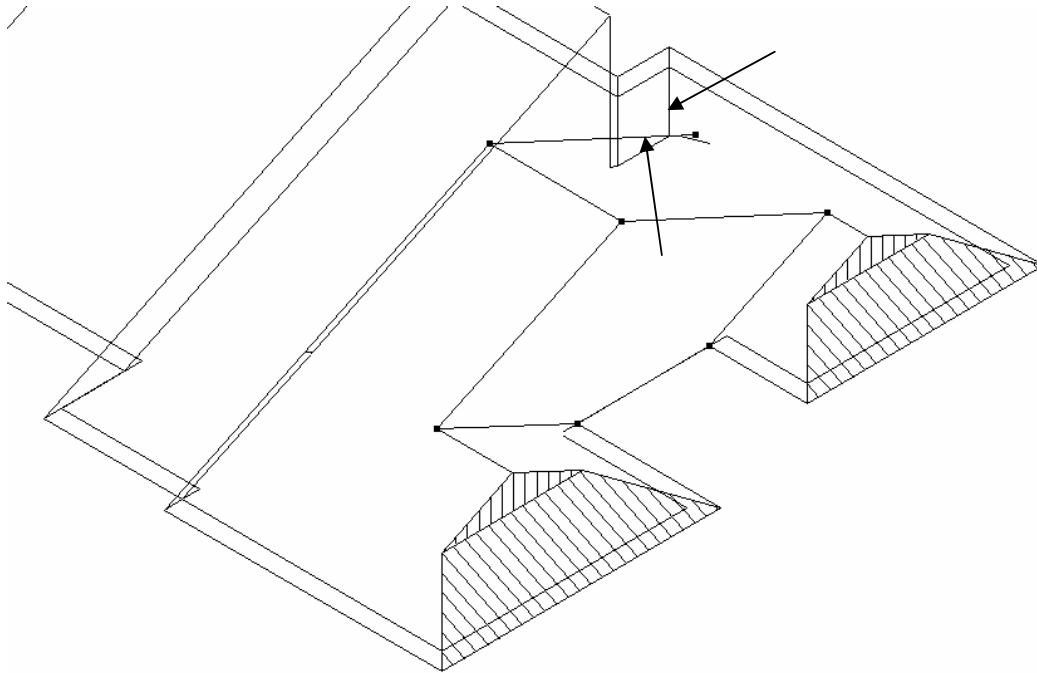
Go to **Copy** line and copy the **ridge** line to the new **gable apex**.



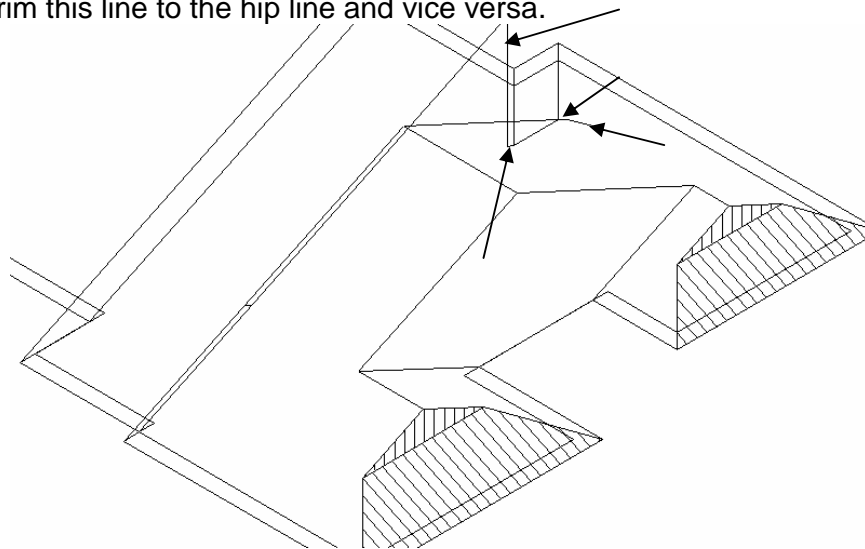
Go to **Trim-Line** and trim line 1 to line 2.



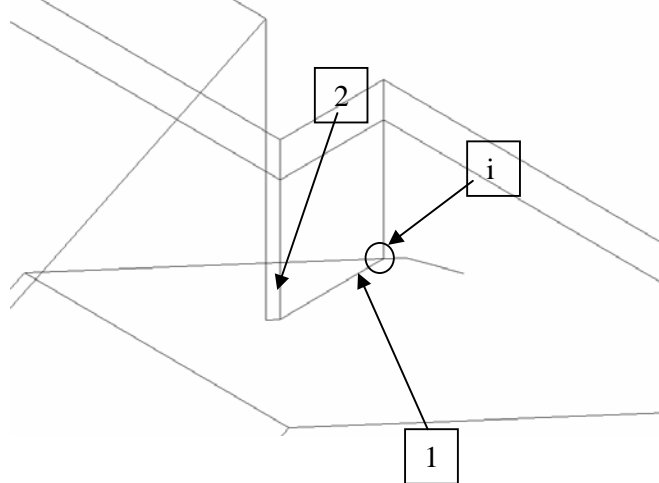
Go to **Copy** line and copy line 1 and snap to point i.

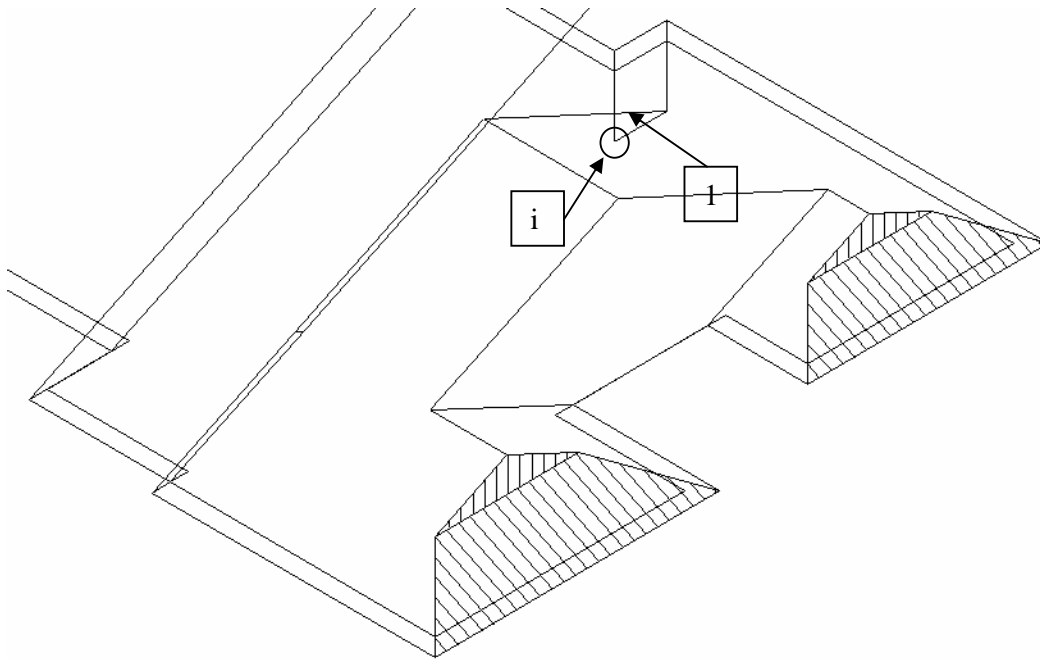


Now trim this line to the hip line and vice versa.

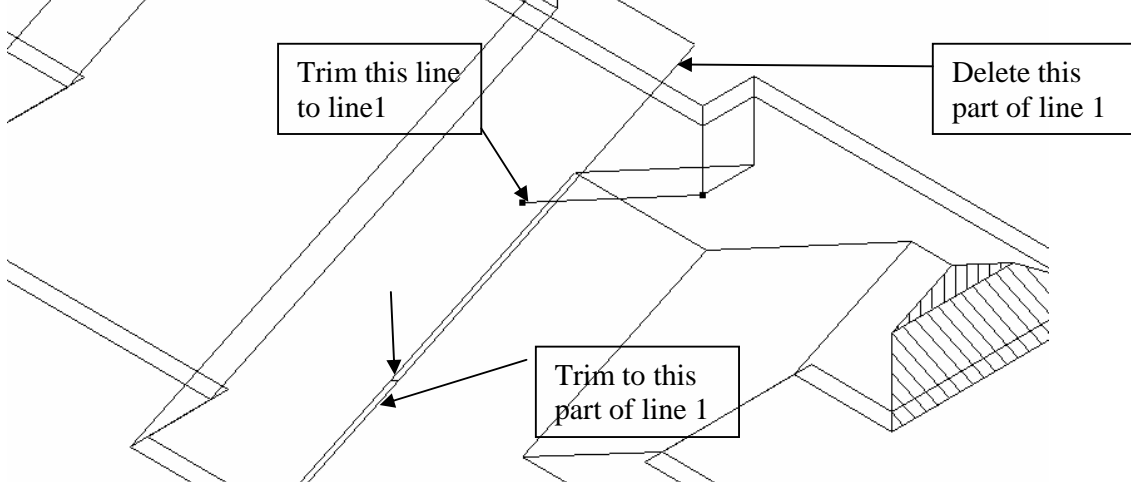


You can now delete the 4 left over lines shown, then move line 1 to point i and trim line 2 back to line 1, blown up below

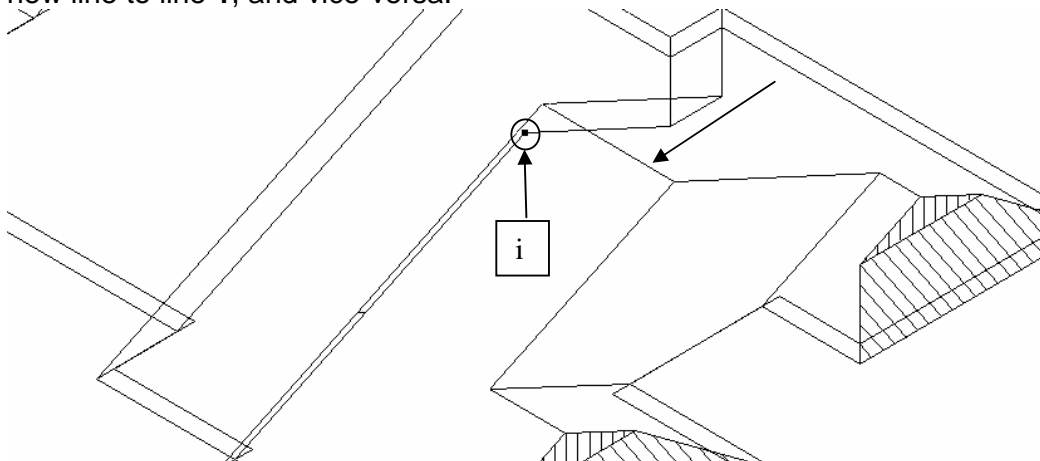




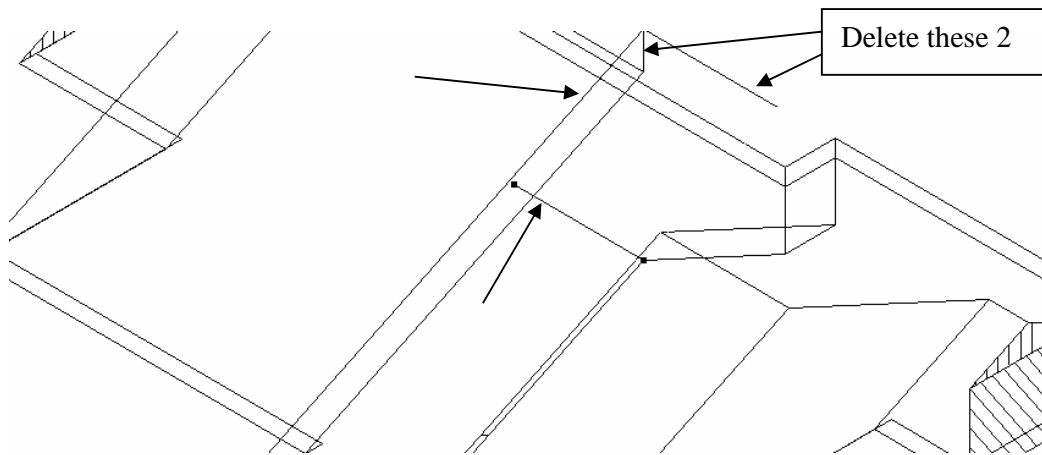
Go to **Copy-Line** and copy line **1** and snap to point **i**.



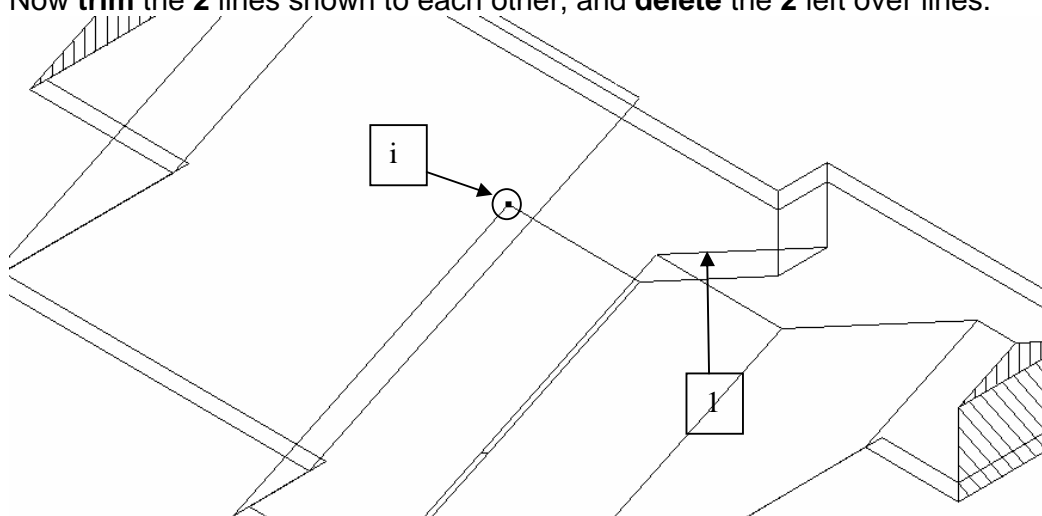
Delete the upper part of Line **1** where shown and the little gable, then trim this new line to line **1**, and vice-versa.



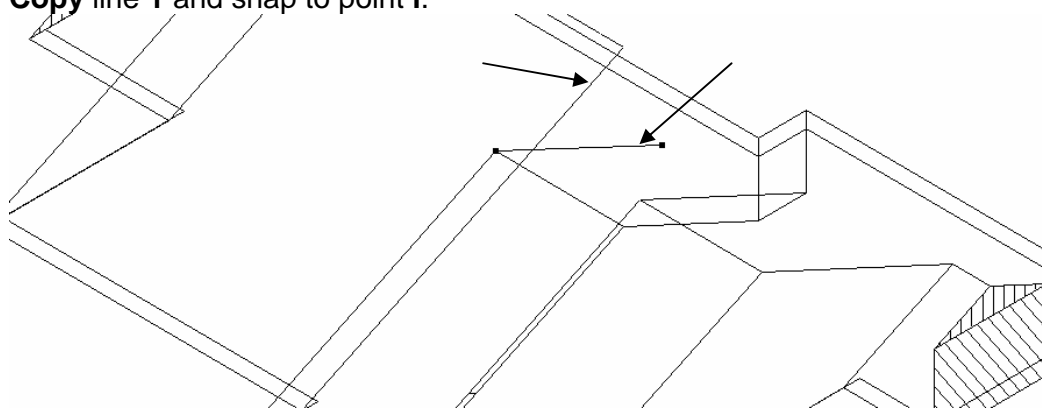
Copy the **ridge** line shown and **snap** to point **i**.



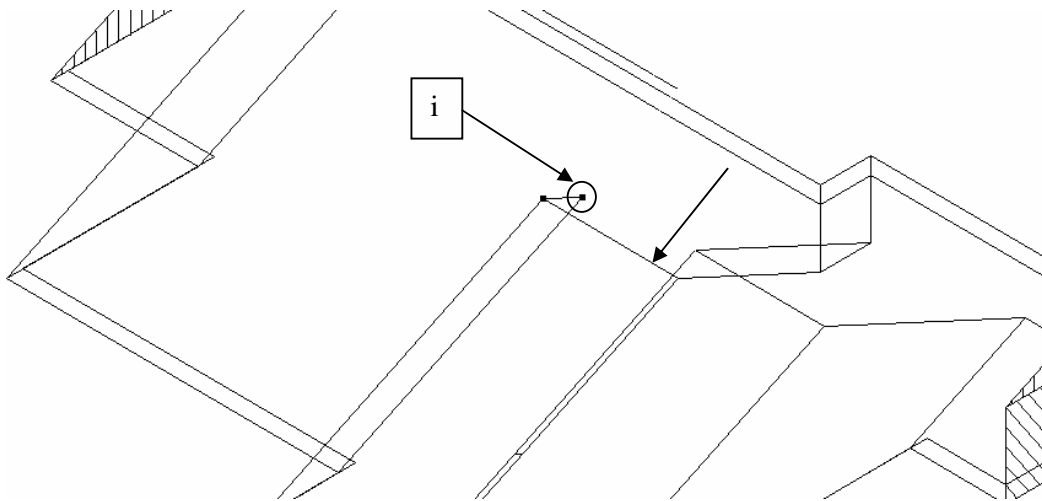
Now **trim** the 2 lines shown to each other, and **delete** the 2 left over lines.



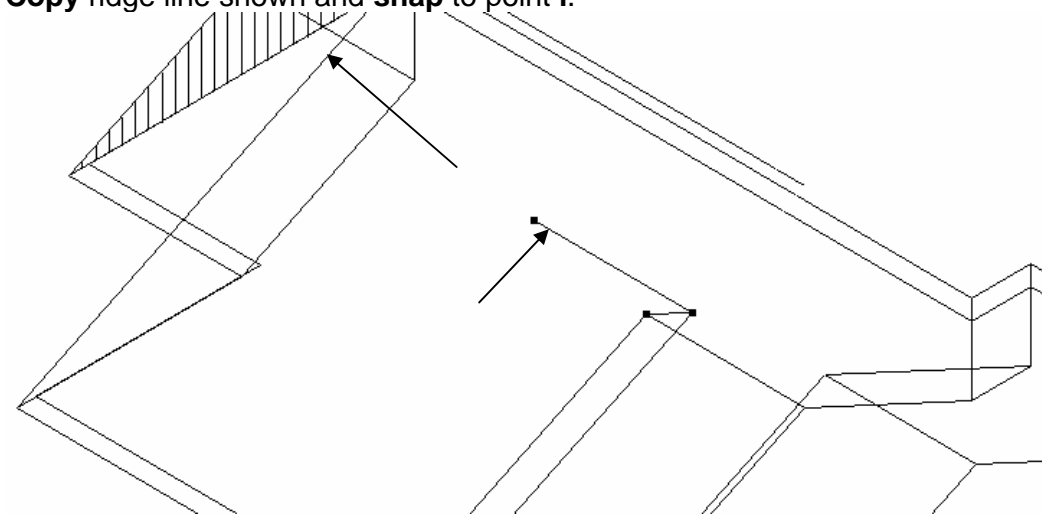
Copy line 1 and snap to point i.



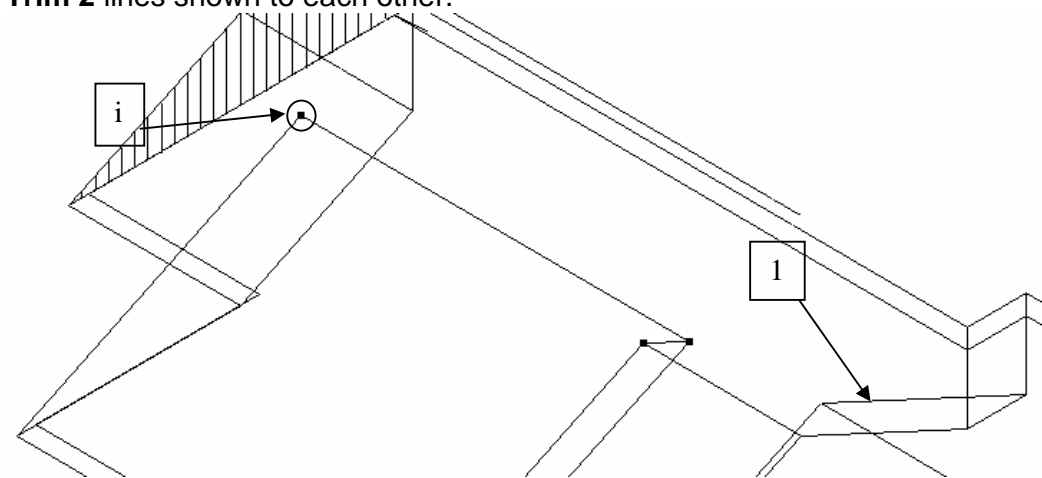
Now **Trim** the 2 lines shown to each other.



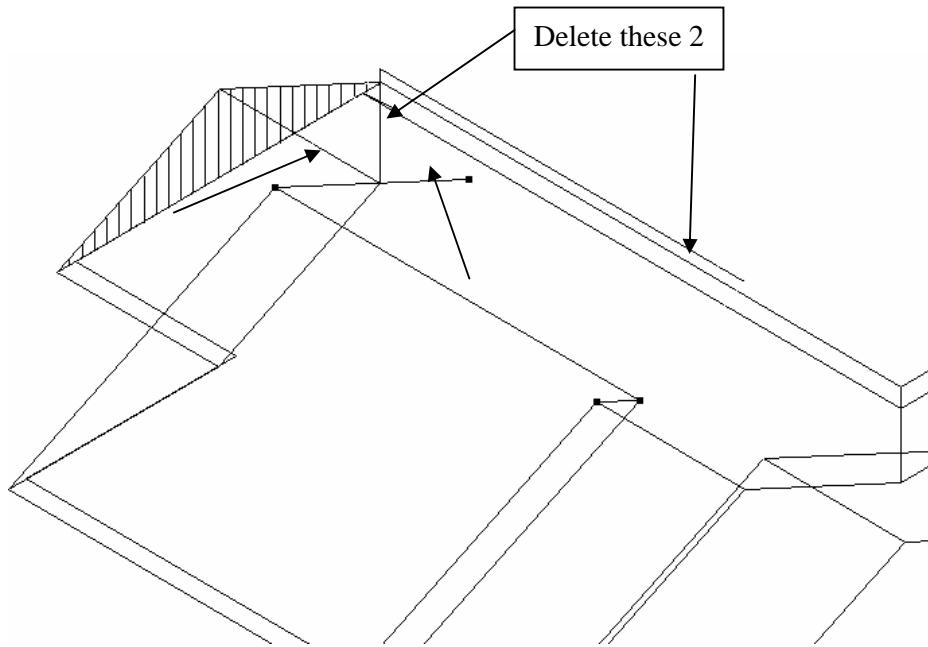
Copy ridge line shown and **snap** to point **i**.



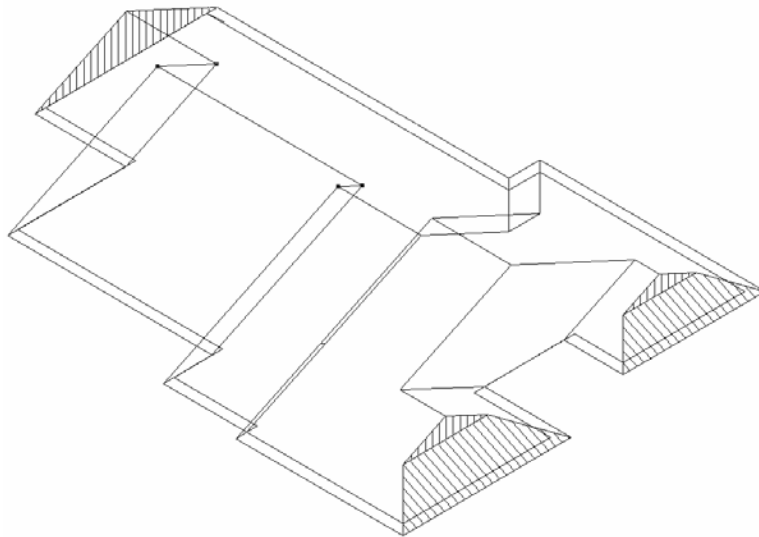
Trim 2 lines shown to each other.



Now **copy** line **1** and **snap** to point **i**.



Trim the 2 lines shown to each other then **delete the 2 left over lines shown.**



Re-insert all of the deleted roof planes using **Ins-Plane** and double check your line types around the gables and you are done.

