

Tips and Tricks

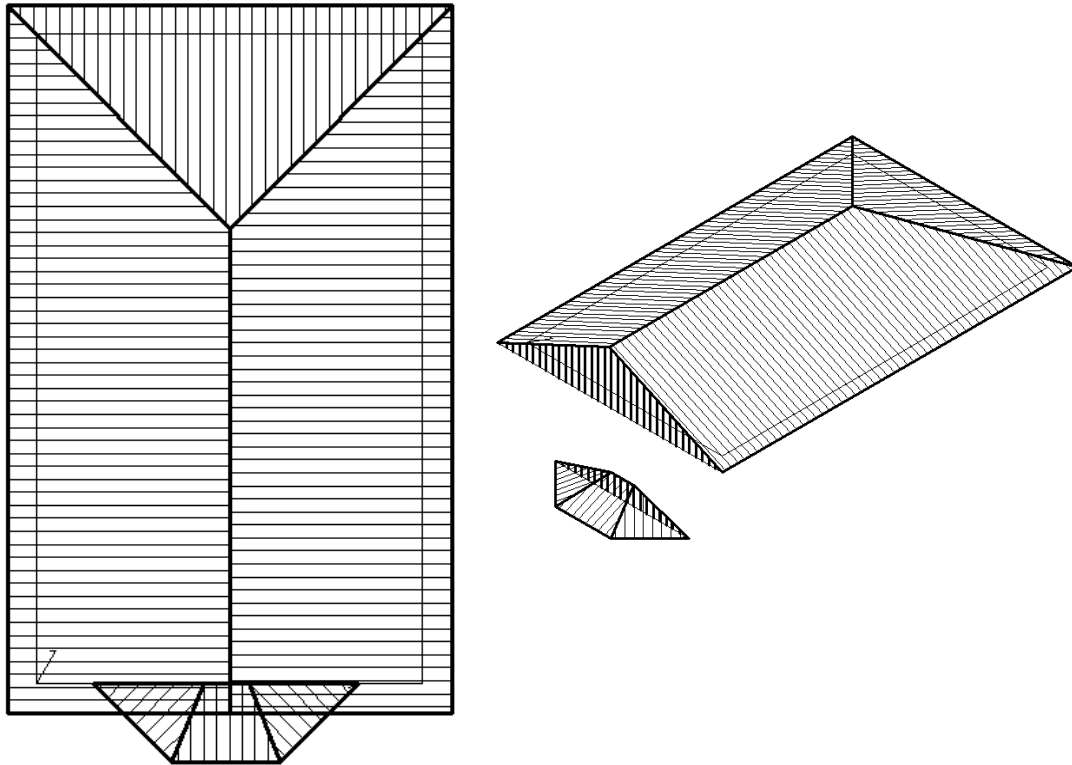
1 of 1

Items drawn from Applicad's Customer Service file

Number: 20

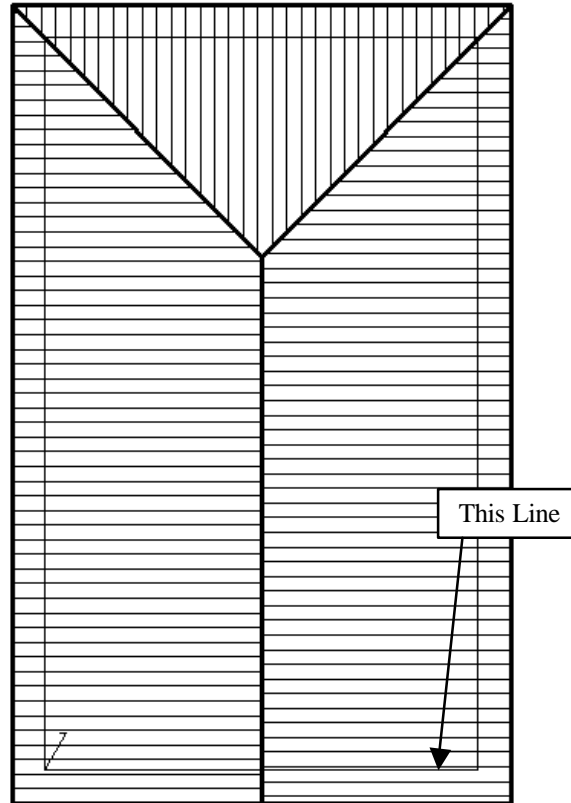
Objective: Lower Storey Bay Window

Commands used: Track Outline and Gable

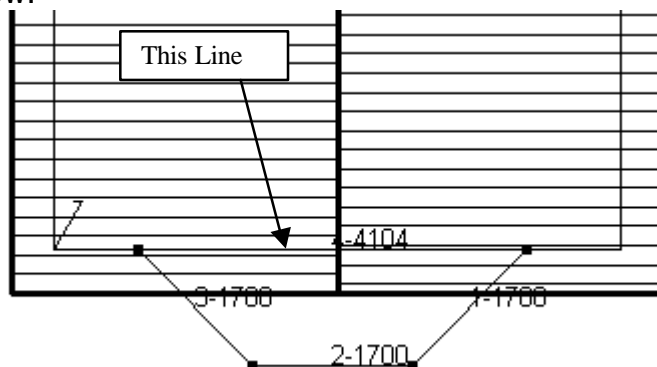


To draw up the above roof, start by drawing up the top storey roof. A simple rectangle, with a gable end on the bottom.

*Information in this note is applicable to Applicad's Steep Roof Products:
Sorcerer, Roof Magician and Roof Wizard.*



From here go back to **Gen-Roof | Track-Outline**. When the crosshairs appear, press the **F2** button to bring up the Inline menu on the right hand side. From this menu select the **Dist** command. Again crosshairs will appear and you will be prompted to "locate a reference line". Select the line shown and a dialog box will appear. Fill in the required distance and click **OK**. The track outline dialog will appear. Click the **Bay** command and fill in the defaults as required. The Direction will be **Left** and the Width will be **Down**, and click **OK**. When the Track Outline box re-appears, click **Close** and **Close Straight**, followed by **Finish**. Fill in the defaults as required and click **OK**. When you are prompted for Gable ends click **Yes** and select the line shown below.

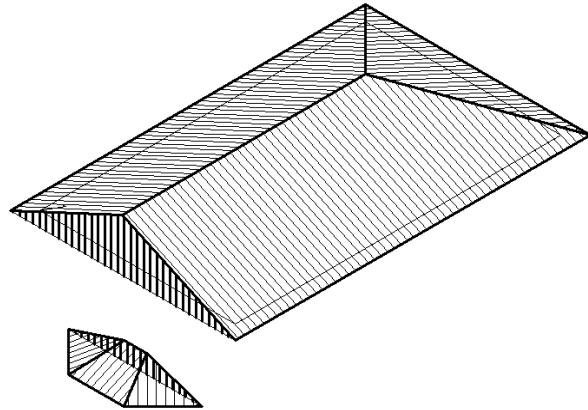
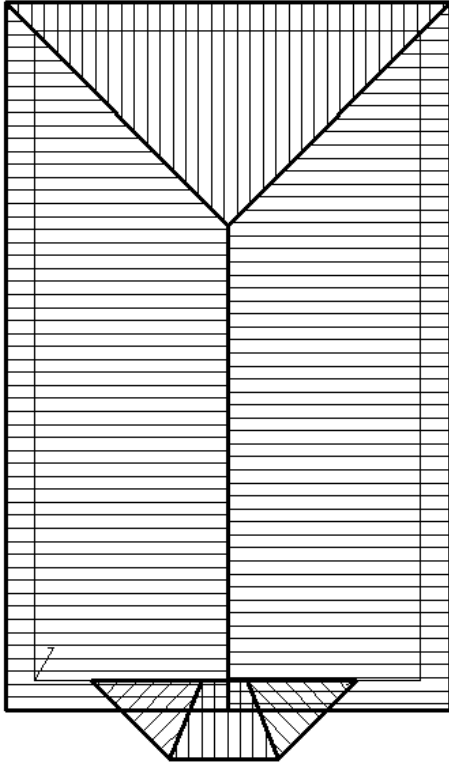


When you select this line it will start to flash. Say **No** to the first line, which will be the longer one, and **Yes** to the second, or shorter one. Right click and select **Yes** to this entity. Say **No** to the next two prompts and the bay will be drawn up finishing our roof, as on the following page.

Tips and Tricks

3 of 3

Items drawn from Applicad's Customer Service file



*Information in this note is applicable to Applicad's Steep Roof Products:
Sorcerer, Roof Magician and Roof Wizard.*