

# Tips and Tricks

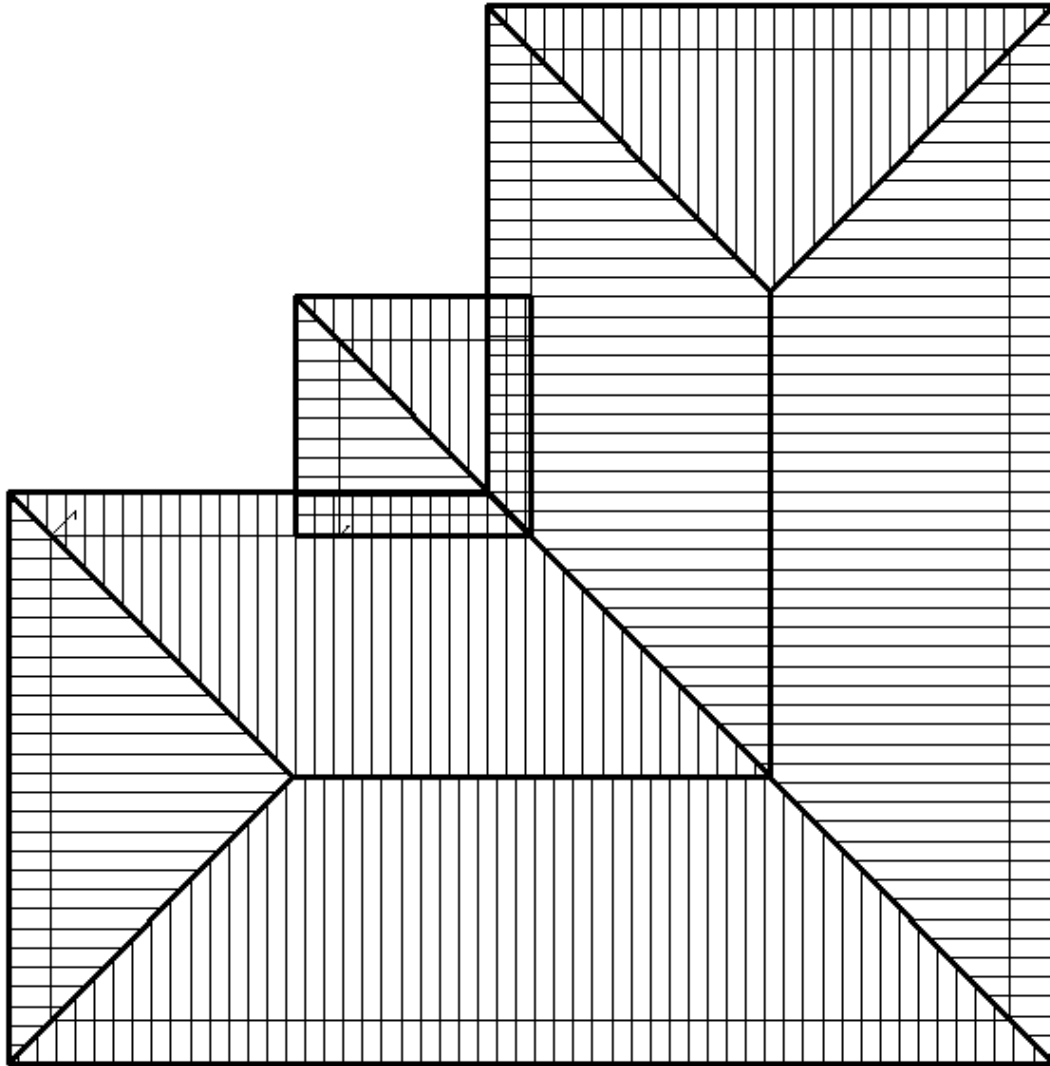
1 of 1

*Items drawn from Applicad's Customer Service file*

**Number: 19**

**Objective: Simple Second Storey Roof**

**Commands used: Gable ends**



Shown above, is the roof outline we are trying to achieve. The hip on the internal corner is at a lower eave height.

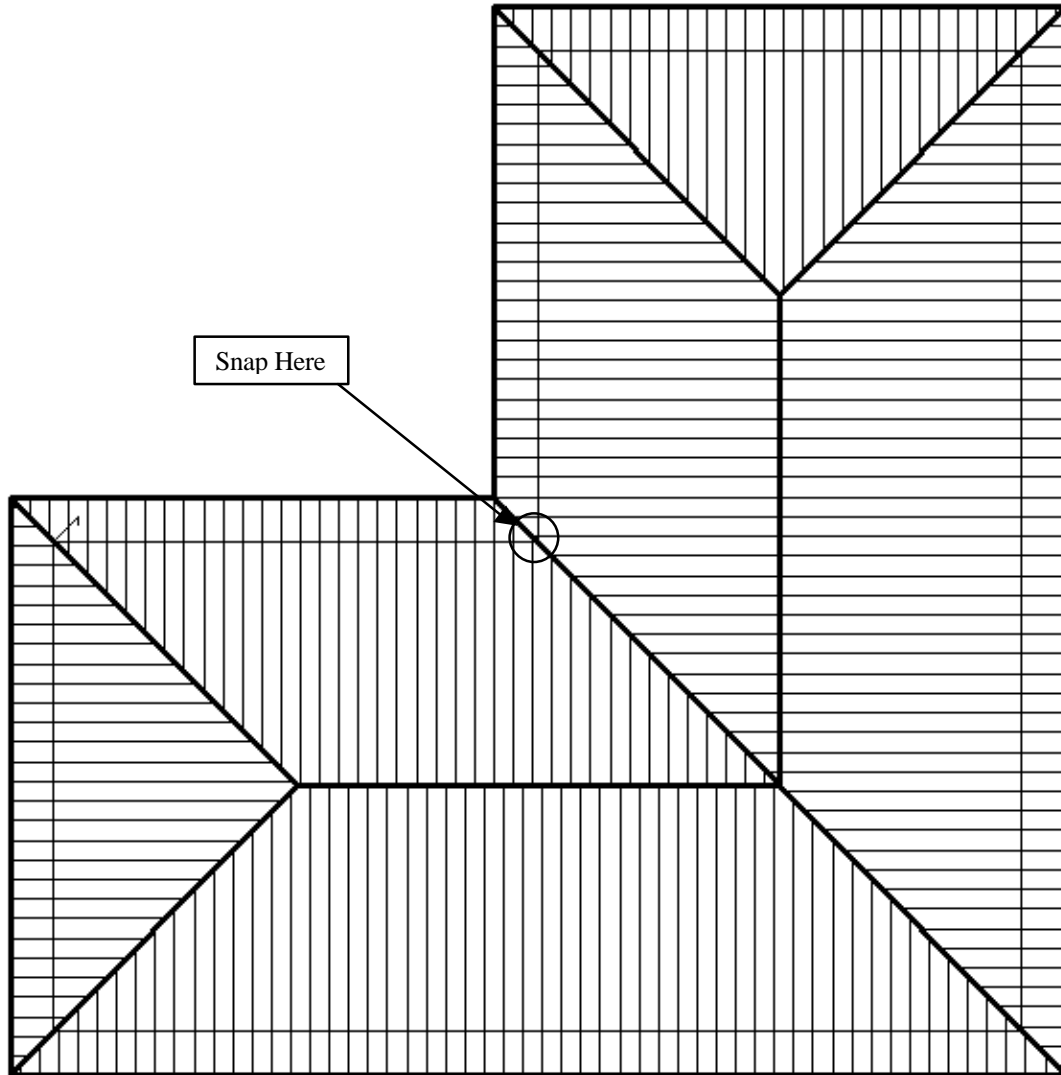
To achieve this we simply draw up our second storey roof as below.

*Information in this note is applicable to Applicad's Steep Roof Products:  
**Sorcerer, Roof Magician and Roof Wizard.***

# Tips and Tricks

2 of 2

*Items drawn from Applicad's Customer Service file*



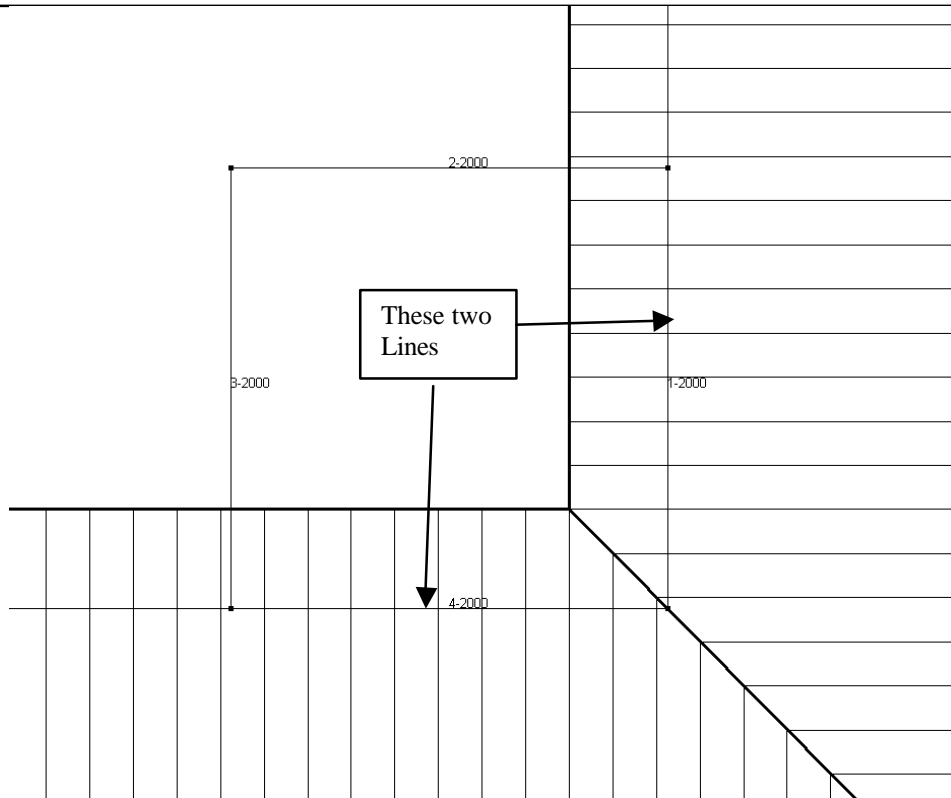
From here go back to **Gen-Roof | Track-Outline**. When the crosshairs appear, "**Snap**" (Middle Mouse button or Shift + Left click) on the internal Corner shown. When the track outline box appears, track around a simple square shape, fill in the defaults as required and click **OK**.

*Information in this note is applicable to Applicad's Steep Roof Products:  
**Sorcerer, Roof Magician and Roof Wizard.***

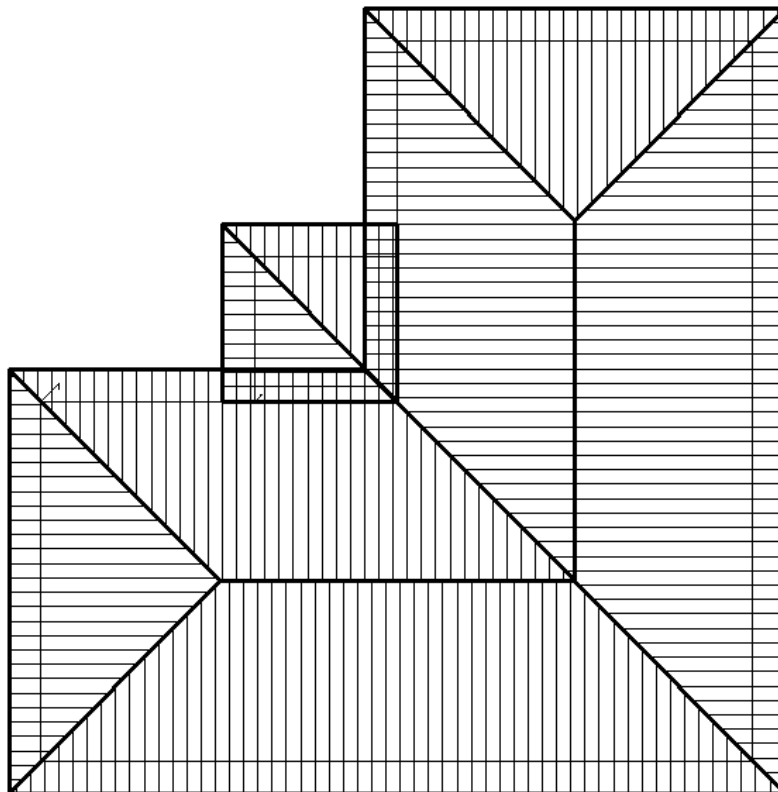
# Tips and Tricks

3 of 3

*Items drawn from Applicad's Customer Service file*



When prompted for Gable ends select the two lines shown. When you select these lines, they will flash, the first one will be a longer one, so select **NO**, a shorter line will then flash. This is the wall line that we want so click **Yes**. When you have selected both lines, right click the mouse and click **Yes** when prompted to use **"These 2 Entities"**. Say **NO** to the next two prompts and your roof will be drawn up and completed, as below



*Information in this note is applicable to Applicad's Steep Roof Products:  
**Sorcerer, Roof Magician and Roof Wizard.***