

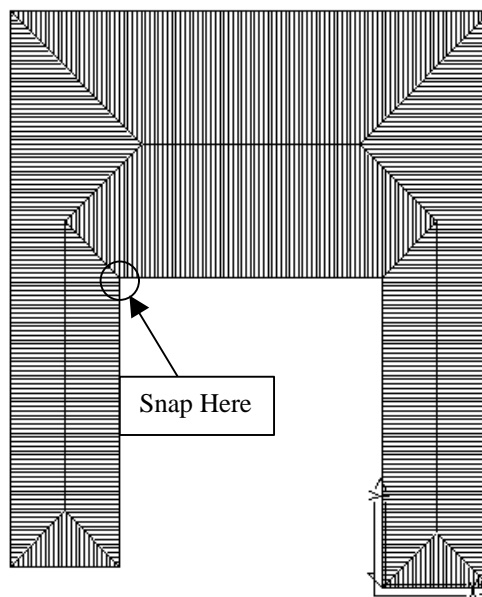
Number: 16

Objective: Insert a Turret above the roof plane with associated cutout

Commands used: **Track-Outline
Cutout**

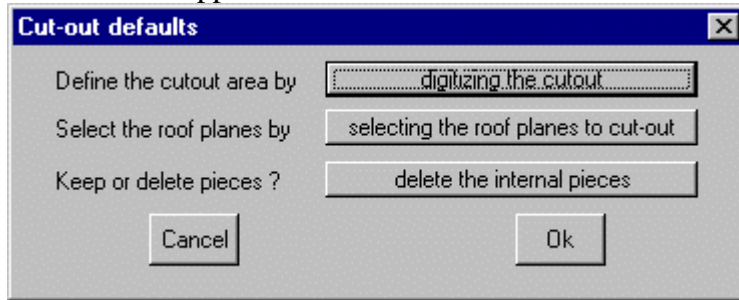
To insert the turret as required:

1. Draw up the main roof as normal.
2. When the roof has drawn up, go to **Gen-Roof | Track-Outline** again only this time when you get the crosshairs on the screen press the **F2** button.
3. Pressing **F2** will bring up an the **Inline** menu.
4. Select **REF** from the **Inline** menu.
5. Your crosshairs will appear again and down the bottom you will be prompted to **Locate a Reference Point**.
6. Using the middle mouse button(or Shift and Left Click). “Snap” to the inside left hand corner on the wall line.

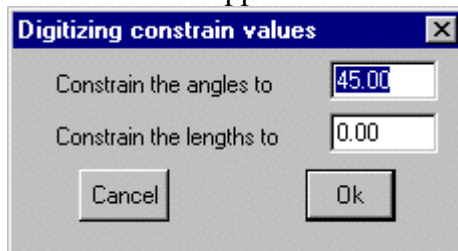


7. When you have snapped to the point you will then be prompted to **Locate Start Point**. To do this we need to type in down the bottom **ix 5000** (Not actual value. Value is distance from corner to start of turret.). Followed by pressing **Enter** key.
8. The **Track Outline** box will then appear, so type in the dimension for the turret, as normal. Ensure that the eave height is correct.

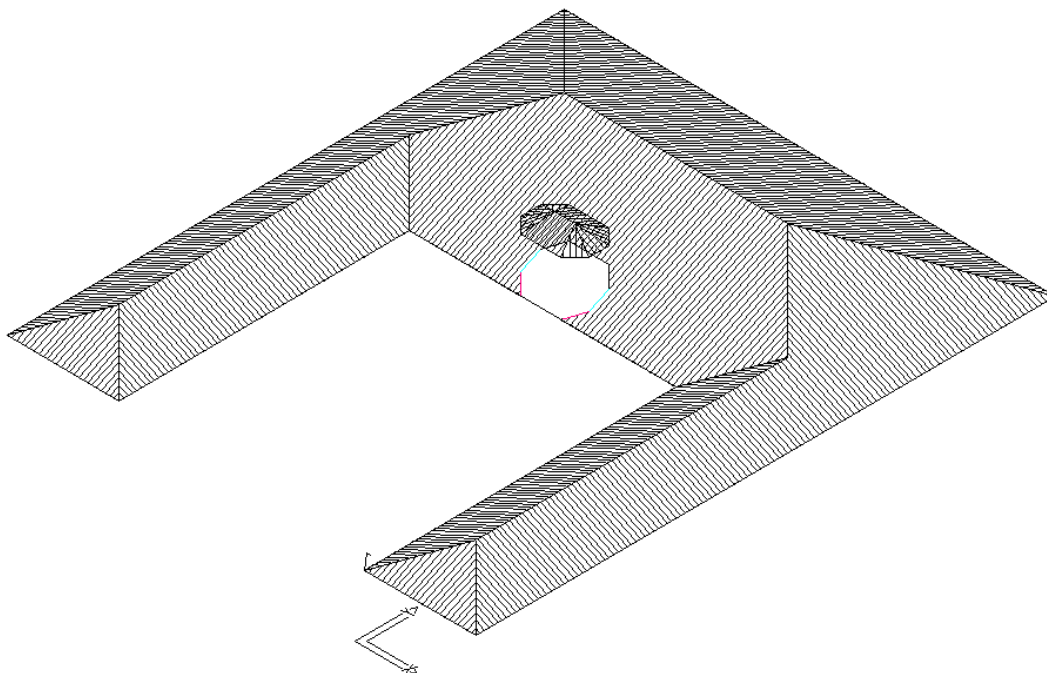
9. When the turret has drawn up select **Mod-Roof | Advanced | Cutout**. The following box will then appear.



10. Make sure that the options are set to as above.
11. When you click **Ok** another box will appear. Also set the values to as follows.



12. Click **Ok** to this box and then “Snap” to all of the points on the turret in a clockwise fashion.
13. When you get to the last point, right click the mouse and select close straight.
14. You will then be prompted to locate the plane you wish to cut out of.
15. Select the large roof plane of the main roof that the turret is in and then right click the mouse.
16. The software will now cut out the shape that you just drew in, out of the plane you selected. And we are done. Your drawing should look similar to the following.



Tips and Tricks

3 of 3

Items drawn from Applicad's Customer Service file

That completes the job. If you have any problems there is a section in the learning guide around page 45 on advanced cutouts, that should help.

*Information in this note is applicable to Applicad's Steep Roof Products:
Sorcerer, Roof Magician and Roof Wizard.*