

Tips and Tricks

1 of 3

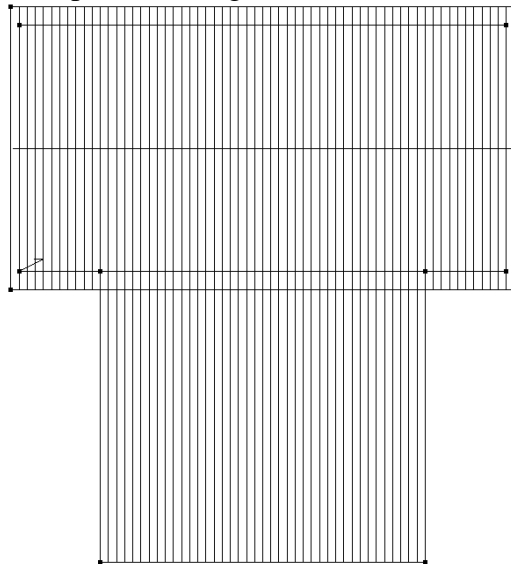
Items drawn from Applicad's Customer Service file

Number: 14

Objective: Use of Track-Plane command

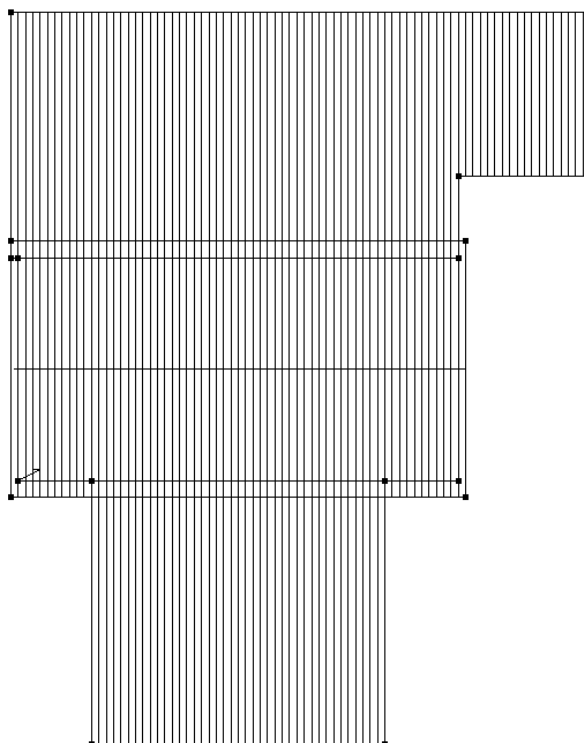
**Commands used: Track-Plane
Move**

To draw up the roof, draw up the existing roof first.



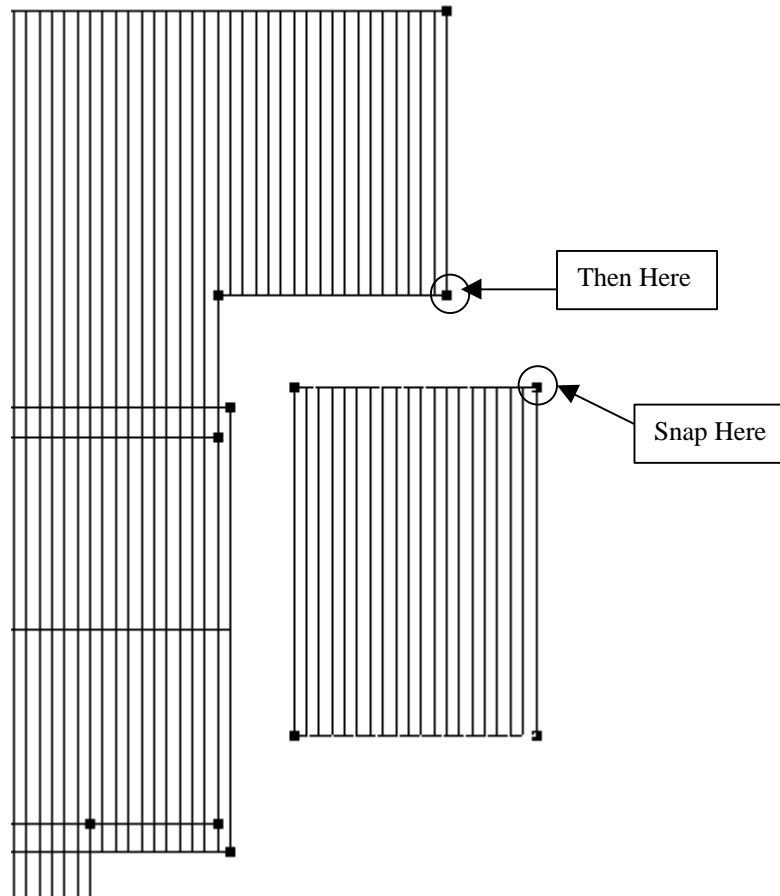
From here we need to go to **Gen-Roof | Track-Plane**, “Snap” to the top right wall line, and track around the new plane, excluding the patio, the projected gable and the entry porch.

Note: The pitching line is the line where the plane pitches from i.e. the lowest part.

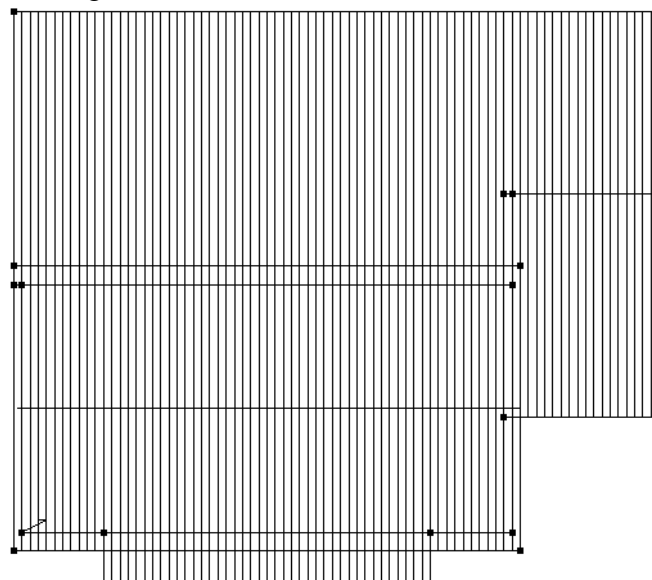


*Information in this note is applicable to Applicad's Steep Roof Products:
Sorcerer, Roof Magician and Roof Wizard.*

Now we need to draw up the entry porch section. Again we go to **Track-Plane**, this time however click in the general area of where we want it to go as we will need to move it later. E.g where shown below.



From here we now need to move our newly inserted plane to the correct position. To do this we need to go to **CAD | Group | Move**. When the crosshairs appear click and drag a box around the plane we want to move and then right click. There should be 5 entities. You are then prompted to locate the initial point, "Snap" to the top right corner of the plane. You are then prompted to locate the final point, "Snap" to the corner where it should go.

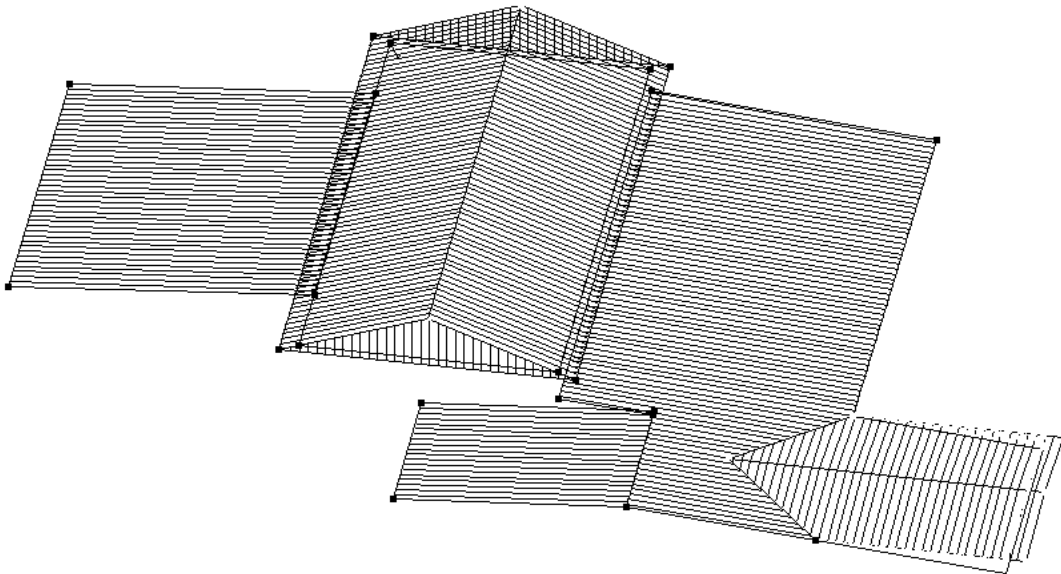
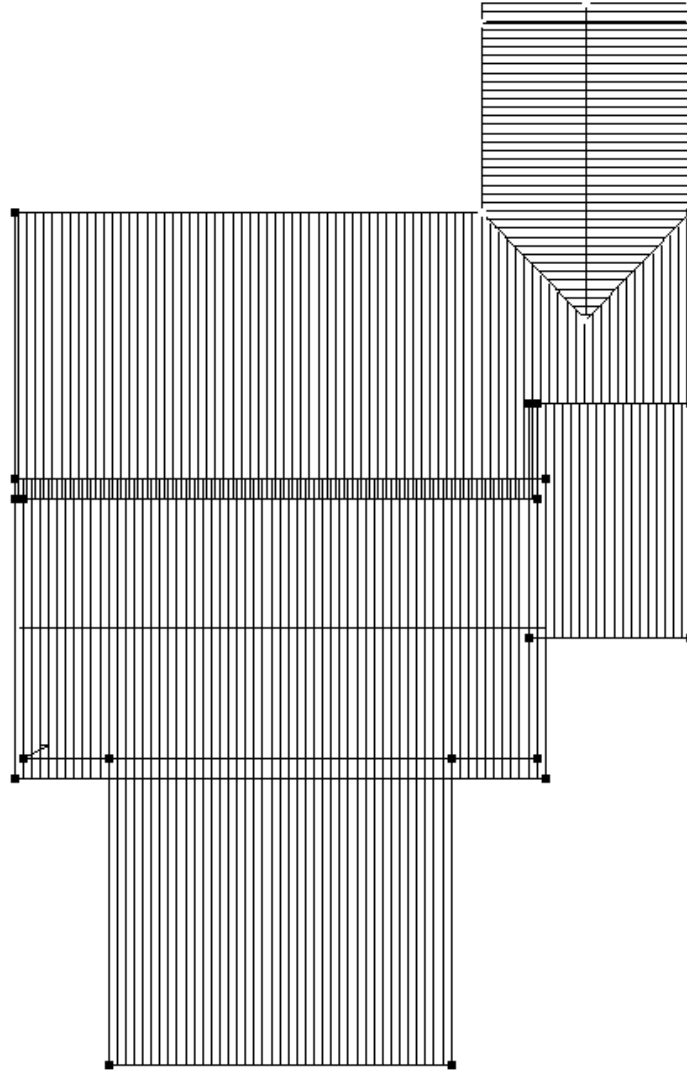


Tips and Tricks

3 of 3

Items drawn from Applicad's Customer Service file

Finally insert the gable using the dormer command, and the patio and you are done. (I haven't done the patio.)



*Information in this note is applicable to Applicad's Steep Roof Products:
Sorcerer, Roof Magician and Roof Wizard.*